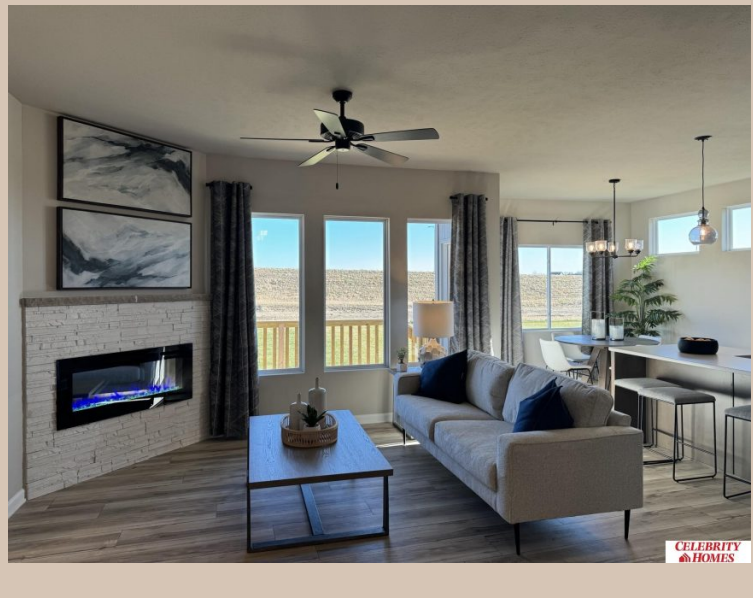


10619 Portage Drive, Papillion, Ne 68046



Details

Price : 371900
Style : 1.0 Story/Ranch
Floorplan : Jordan
Communities : Schram 108
Bedrooms : 3
Baths : 2
Sq Footage : 1920
Included : Welcome to The Jordan by Celebrity Homes. This Ranch Design offers 3 bedrooms on the main floor (2 on one side, 1 on the other) With privacy for the Owner's Suite! The JORDAN Design has a spacious main floor Gathering Room leading into an Eat-In Island Kitchen and Dining Area. And with Raised Ceilings towering over 9', the main floor seems even more spacious. Need even more space, YOU GOT IT with a Finished Rec Room in the Basement. Owner's Suite is appointed with a walk-in closet, ¾ Privacy Bath Design with a Dual Vanity. Features of this 3 Bedroom, 2 Bath Home Includes: 2 Car Garage with a Garage Door Opener, Refrigerator, Washer/Dryer Package, Quartz Countertops, Luxury Vinyl Panel Flooring (LVP) Package, Sprinkler System, Extended 2-10 Warranty Program, 3/4 Bath Rough-In, Professionally Installed Blinds, and that's just the start! (Pictures of Model Home) Price may reflect promotional discounts, if applicable
Estimate Completion : 180 Days
School District : Papillion-La Vista
Directions : From Highway 370 & 108th Street, head south on 108th Street. Travel to Portage Dr. Head east into Schram 108. Visit model homes for access to homes and Community Map

Location



Scan the code above with your mobile device or click it to go directly to the Celebrity Homes & Townhomes website for 10619 Portage Drive, Papillion, Ne 68046