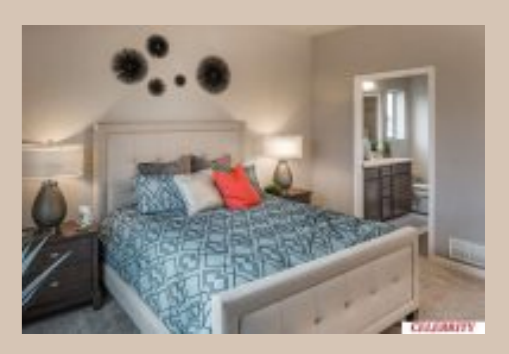


18140 Camden Avenue, Elkhorn, Ne 68022



Details

Price : 299900

Style : 1.0 Story/Ranch

Floorplan : Dayton Patio

Communities : Sagewood Valley

Bedrooms : 2

Baths : 2

Sq Footage : 1397

Included : The "Dayton DLX Patio" by Celebrity Homes. Open Design offers a large Island Kitchen, Gathering Room, Raised Ceilings, Owner's Suite includes spacious Bath w/ Deluxe Shower & Dual Vanity & that's just the start! Quality GE Appliances (Refrigerator, Washer & Dryer), Designer Light Pkgs, GDO, Window Blinds & Extended 2-10 Warranty Program. (Pictures of Model Home) Price may reflect promotional discounts, if applicable

Estimate Completion : 90 Days

School District : Elkhorn

Directions : From Maple & 168th, head North to Fort St, head West to 174th St. Turn Left into Community. Turn Right on Tibbles to Model Homes.

Scan the code above with your mobile device or click it to go directly to the Celebrity Homes website for 18140 Camden Avenue, Elkhorn, Ne 68022