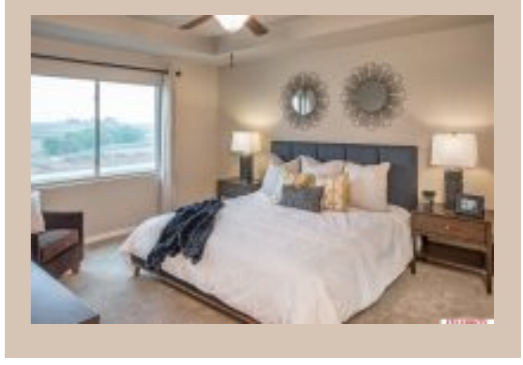
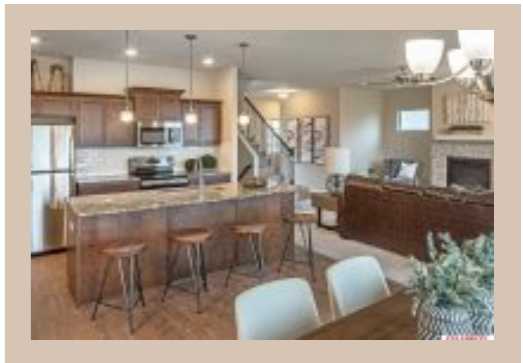


4906 N 180 Avenue, Elkhorn, Ne 68022



Details

Price : 423400

Style : 2 Story

Floorplan : Kendall

Communities : Sagewood Valley

Bedrooms : 4

Baths : 3

Sq Footage : 2485

Included : The "Kendall" by Celebrity Homes. Open Design that offers an oversized Island Kitchen with Side Office, Gathering Room, Raised Ceilings, Owner's Suite includes spacious Bath w/Deluxe Shower, Bath RI at Bsmt, and that's just the start! Quality GE Appliances (Refrigerator, Washer & Dryer), Designer Light Pkgs, GDO, Window Blinds & Extended 2-10 Warranty Program. (Pictures of Model Home) Price may reflect promotional discounts, if applicable. MODEL HOME - NOT FOR SALE

School District : Elkhorn

Directions : From Maple & 168th, head North to Fort Street, head West to 174th Street. Turn Left into Community. Turn Right on Tibbles to Model Homes. Visit Model homes for Community Map and Access to Homes.

Scan the code above with your mobile device or click it to go directly to the Celebrity Homes website for 4906 N 180 Avenue, Elkhorn, Ne 68022