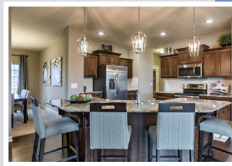


# Manchester

2 Story • 2605 sf

designer<sup>TM</sup>  
INSPIRED LIVING

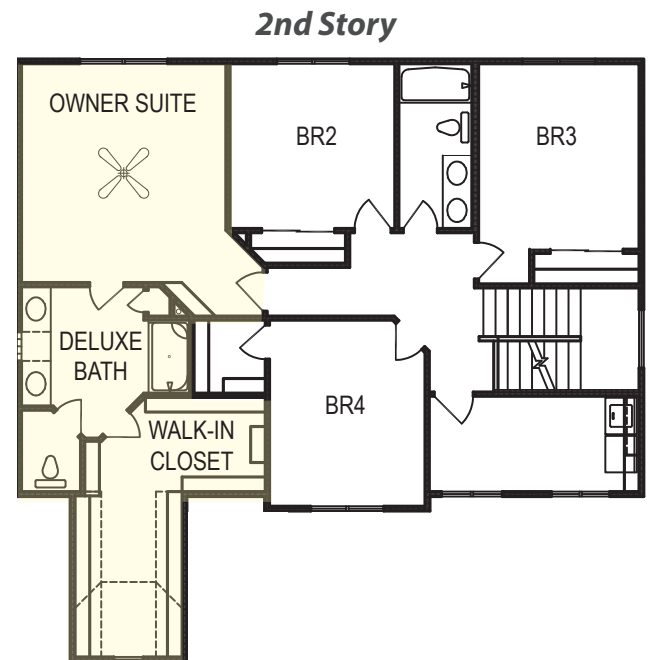
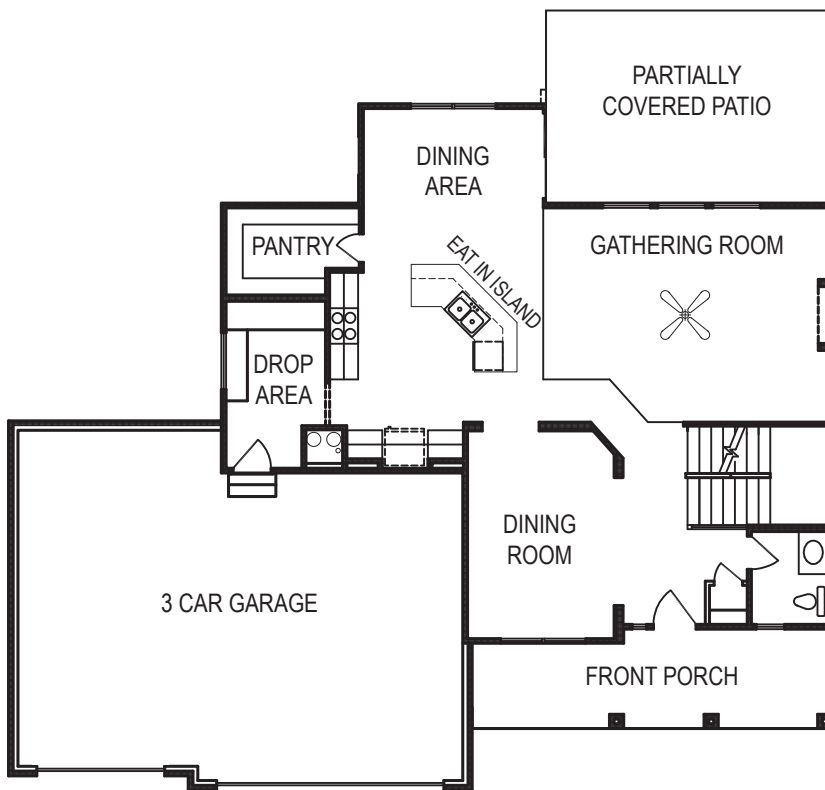


## Yes! It's All Included!

- Homesite
- Linear Fireplace
- Open Kitchen with Eat In Island
- Partially Covered Patio
- Designer Lighting Package

### Additional Features:

- 🔥 Walk Out Basement Package
- 🔥 Finished Basement:
  - Rec Room
  - BR5/Office
  - Finished Bathroom



CelebrityHomesOmaha.com



**CELEBRITY**  
**HOMES**  
Homes • Villas

\*Celebrity Homes Inc., 1997-present. Celebrity Homes reserves the right to make any changes to floor plan, price, specification or material changes for product improvement.