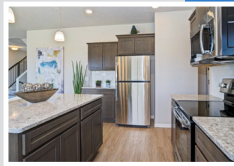


# Seville

2 Story • 2057 sf

advantage™  
YOUR NEXT MOVE

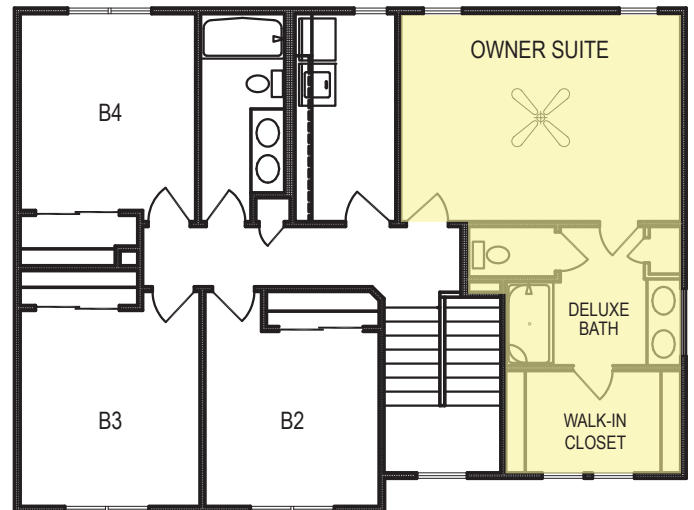
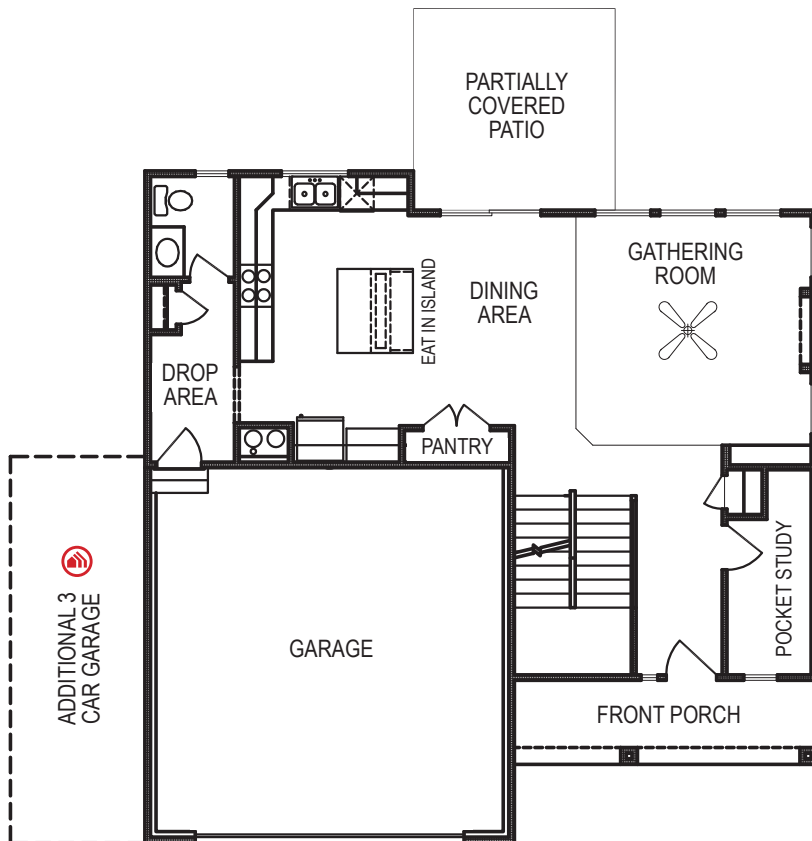


**Yes! It's All Included!**

- Homesite
- Linear Fireplace
- Open Kitchen with Eat In Island
- Designer Lighting Package
- Front Porch
- Partially Covered Patio

## Additional Features:

- 🏠 3 Car Garage
- 🏠 Walk Out Basement Package
- 🏠 Finished Basement:
  - Rec Room
  - BR5/Office
  - Finished Bathroom



**CelebrityHomesOmaha.com**



**CELEBRITY  
HOMES**  
Homes • Villas

\*Celebrity Homes Inc., 1997-present. Celebrity Homes reserves the right to make any changes to floor plan, price, specification or material changes for product improvement.