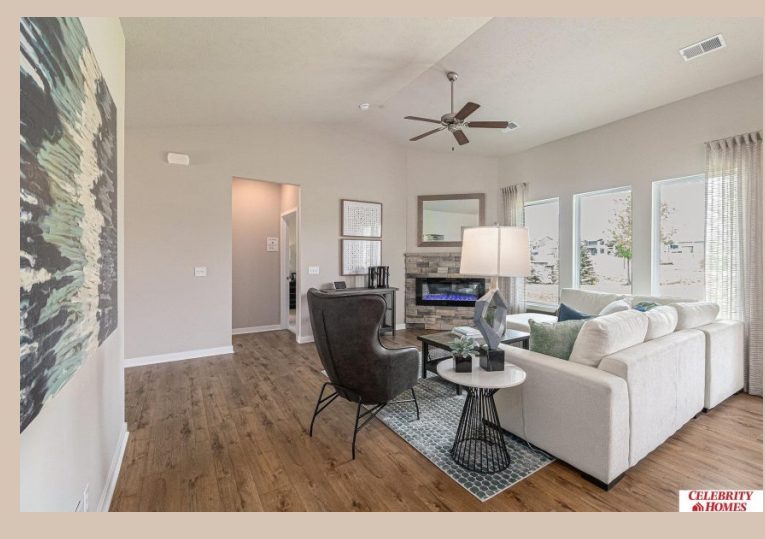


6713 N 168 Avenue, Omaha, Ne 68116



Scan the code above with your mobile device or click it to go directly to the Celebrity Homes & Townhomes website for 6713 N 168 Avenue, Omaha, Ne 68116

Details

Price : 330900
Style : 1.0 Story/Ranch
Floorplan : Mirada Patio DLX
Communities : Lakeview 168
Bedrooms : 2
Baths : 2
Sq Footage : 1421
Included : Welcome to The Mirada Patio Home a LIFESTYLE Villa by Celebrity Homes. Villa living w/NO Stairs but plenty of spacious living. Entering the Mirada, you will see the front bedroom & a Pocket Office. You will be surprised by the grandeur of the space & all of the windows in the Gathering Room! The Eat In Island Kitchen has a walk-in pantry & flows into a dining area that shares a view into the main room. A Drop Off Area from the garage is an added bonus! The Owner's Suite has a walk-in closet, linen closet, ¾ Privacy Bath Design & a Dual Vanity. Features of this 2 PLUS Bedroom, 2 Bath Villa Include: Oversized 2 Car Garage with Garage Door Opener, Refrigerator, Washer/Dryer Package, Quartz Countertops, Luxury Vinyl Panel Flooring (LVP) Package, Sprinkler System, Extended 2-10 Warranty, Professionally Installed Blinds, & that's just the start! Snow Removal, Lawn Maintenance, even Trash Removal are all included! (Pictures of Model Home) Price may reflect promotional discounts, if applicable
Estimate Completion : 180 Days
School District : Bennington
Directions : From 168th & Ida St, Head South to Reddick. Turn right (West) into community. Visit model homes for access to homes and Community Map.

Location