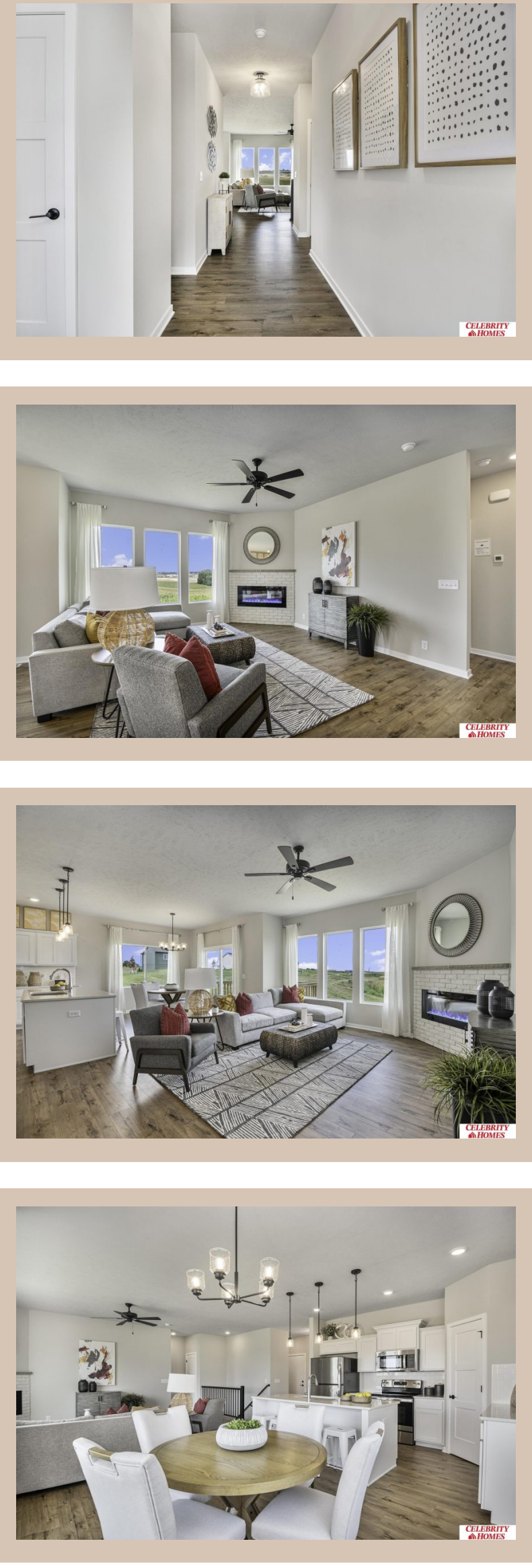


6318 N 168 Avenue, Omaha, Ne 68116



Details

Price : 403900
Style : 1.0 Story/Ranch
Floorplan : Concord
Communities : Lakeview 168
Bedrooms : 3
Baths : 2
Sq Footage : 1533
Included : Welcome to The Concord by Celebrity Homes. Split bedroom Ranch Design that offers 3 bedrooms on the main floor (2 on one side, 1 on the other)...privacy for the Owner's Suite. The Concord Design offers a surprisingly roomy main floor Gathering Room leading into an Eat-In Island Kitchen and Dining Area. Plenty of room in the lower level for a Rec Room, another Bedroom, and even another ¾ Bath! Owner's Suite is appointed with a walk-in closet, ¾ Privacy Bath Design with a Dual Vanity. Features of this 3 Bedroom, 2 Bath Home Include: 2 Car Garage with a Garage Door Opener, Refrigerator, Washer/Dryer Package, Quartz Countertops, Luxury Vinyl Panel Flooring (LVP) Package, Sprinkler System, Extended 2-10 Warranty Program, 3/4 Bath Rough-In, Professionally Installed Blinds, and that's just the start! (Pictures of Model Home) Price may reflect promotional discounts, if applicable.
Estimate Completion : 150 Days
School District : Bennington
Directions : From 168th & Ida St, Head South to Reddick. Turn right (West) into community. Visit Models for access to homes and Community Map.



Scan the code above with your mobile device or click it to go directly to the Celebrity Homes & Townhomes website for 6318 N 168 Avenue, Omaha, Ne 68116

Location

