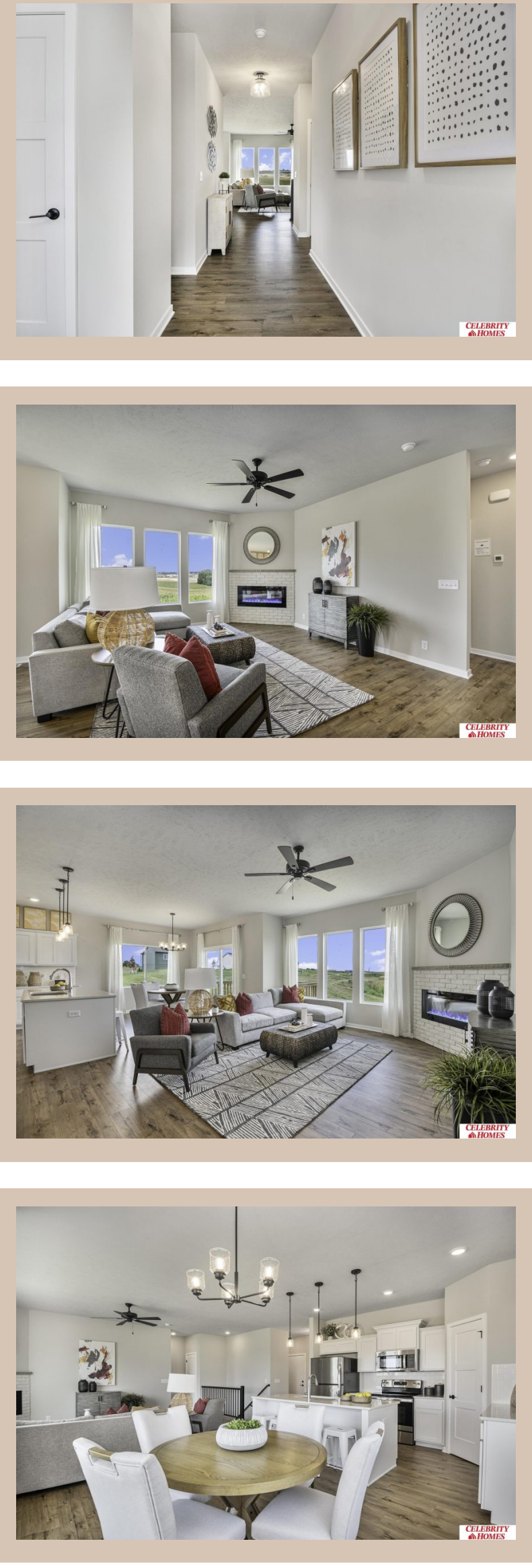


19805 Greenleaf Street, Gretna, Ne 68028



Details

Price : 401900
Style : 1.0 Story/Ranch
Floorplan : Concord
Communities : Remington West
Bedrooms : 3
Baths : 2
Sq Footage : 1533
Included : Welcome to The Concord by Celebrity Homes. Split bedroom Ranch Design that offers 3 bedrooms on the main floor (2 on one side, 1 on the other)...privacy for the Owner's Suite. The Concord Design offers a surprisingly roomy main floor Gathering Room leading into an Eat-In Island Kitchen and Dining Area. Plenty of room in the lower level for a Rec Room, another Bedroom, and even another ¾ Bath! Owner's Suite is appointed with a walk-in closet, ¾ Privacy Bath Design with a Dual Vanity. Features of this 3 Bedroom, 2 Bath Home Include: 3 Car Garage with a Garage Door Opener, Refrigerator, Washer/Dryer Package, Quartz Countertops, Luxury Vinyl Panel Flooring (LVP) Package, Sprinkler System, Extended 2-10 Warranty Program, 3/4 Bath Rough-In, Professionally Installed Blinds, and that's just the start! (Pictures of Model Home) Price may reflect promotional discounts, if applicable. Final price may vary due to additional features added at time of contract.
Estimate Completion : 180 Days
School District : Gretna
Directions : From 192nd & Giles Rd, head west to 200th Street. Turn right into community. Visit Model Homes in Harrison 210 (210th & Harrison) or Giles Pointe (180th & Giles) for Community Map and access to homes



Scan the code above with your mobile device or click it to go directly to the Celebrity Homes & Townhomes website for 19805 Greenleaf Street, Gretna, Ne 68028

Location
