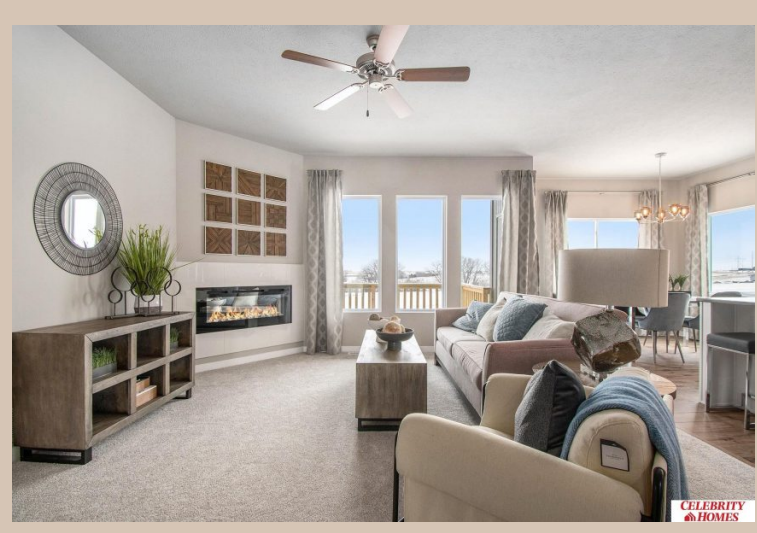
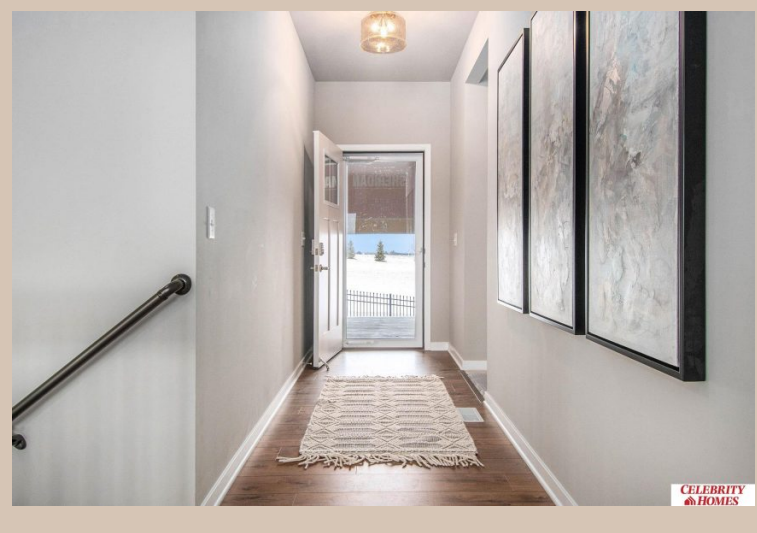


19801 Greenleaf Street, Gretna, Ne 68028



Details

Price : 407900  
Style : 1.0 Story/Ranch  
Floorplan : Sheridan Exp  
Communities : Remington West  
Bedrooms : 3  
Baths : 2  
Sq Footage : 1637  
Included : Welcome to The exp Sheridan by Celebrity Homes. Ranch Design that offers 3 bedrooms on the main floor This design offers a surprisingly roomy main floor Gathering Room leading into an Eat-In Island Kitchen and Dining Area. Plenty of room in the lower level for a Rec Room, another Bedroom, and even another ¾ Bath! Owner’s Suite is appointed with a walk-in closet, ¾ Privacy Bath Design with a Dual Vanity. Features of this 3 Bedroom, 2 Bath Home Include: 3 Car Garage with a Garage Door Opener, Refrigerator, Washer/Dryer Package, Quartz Countertops, Luxury Vinyl Panel Flooring (LVP) Package, Sprinkler System, Extended 2-10 Warranty Program, 3/4 Bath Rough-In, Professionally Installed Blinds, and that’s just the start! (Pictures of Model Home) Price may reflect promotional discounts, if applicable  
Estimate Completion : 180 Days  
School District : Gretna  
Directions : From 192nd & Giles Rd, head west to 200th Street. Turn right into community. Visit Model Homes in Harrison 210 (210th & Harrison) or Giles Pointe (180th & Giles) for Community Map and access to homes



Scan the code above with your mobile device or click it to go directly to the Celebrity Homes & Townhomes website for 19801 Greenleaf Street, Gretna, Ne 68028

Location



