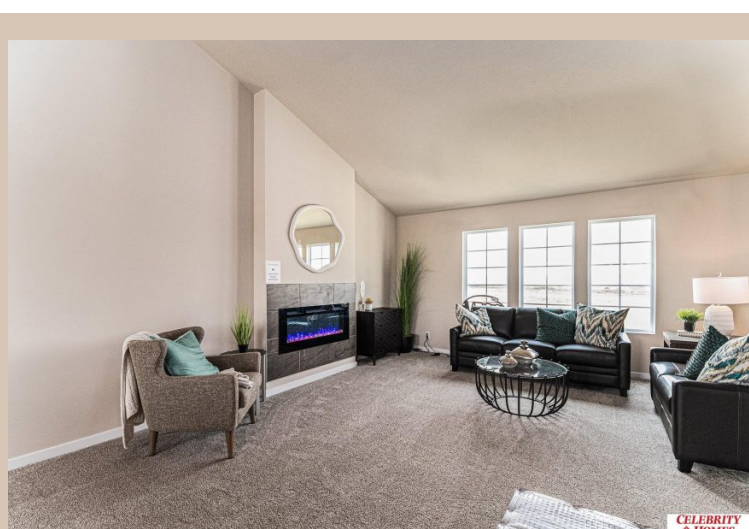
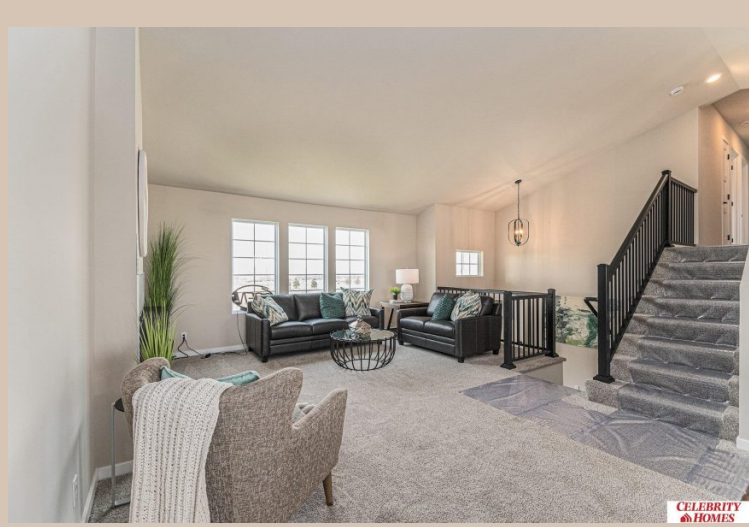
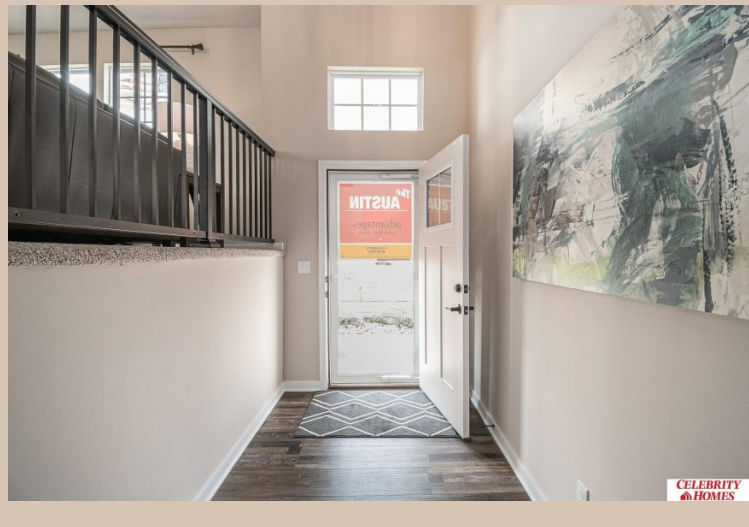


17907 Palisades Drive, Omaha, Ne 68136



Details

Price : 381900
Style : Multi-Level
Floorplan : Austin
Communities : Palisades West
Bedrooms : 3
Baths : 2
Sq Footage : 1870
Included : Welcome to The Austin by Celebrity Homes. A Grand Foyer welcomes you to this truly Open and Spacious Design. Once on the main floor, the Gathering Room is sure to impress with its’ high ceilings and Electric Linear Fireplace. An Eat-In Island Kitchen with Dining Area is perfect for any size growing family. Need to entertain or just relax, the finished lower level is just PERFECT! And the additional daylight windows are the magic touch. A “Hidden Gem” of the Austin is its’ upper level Laundry Room, close to bedrooms! Owner’s Suite is appointed with a walk-in closet, ¾ Bath with a Dual Vanity. Features of this 3 Bedroom, 2 Bath Home Include: Oversized 2 Car Garage with a Garage Door Opener, Refrigerator, Washer/Dryer Package, Quartz Countertops, Luxury Vinyl Panel Flooring (LVP) Package, Sprinkler System, Extended 2-10 Warranty Program, ½ Bath Rough-In, Professionally Installed Blinds, and that’s just the start!(Pictures of Model Home) Price may reflect promotional discounts
Estimate Completion : 90 Days
School District : Gretna
Directions : From 168th & Harrison, head South to Palisades Drive. Turn right into community. Take 1st Right to Model Home. Visit Model Homes in Giles Pointe (180th & Giles) for Community Map and Access to Homes

Location



Scan the code above with your mobile device or click it to go directly to the Celebrity Homes & Townhomes website for 17907 Palisades Drive, Omaha, Ne 68136