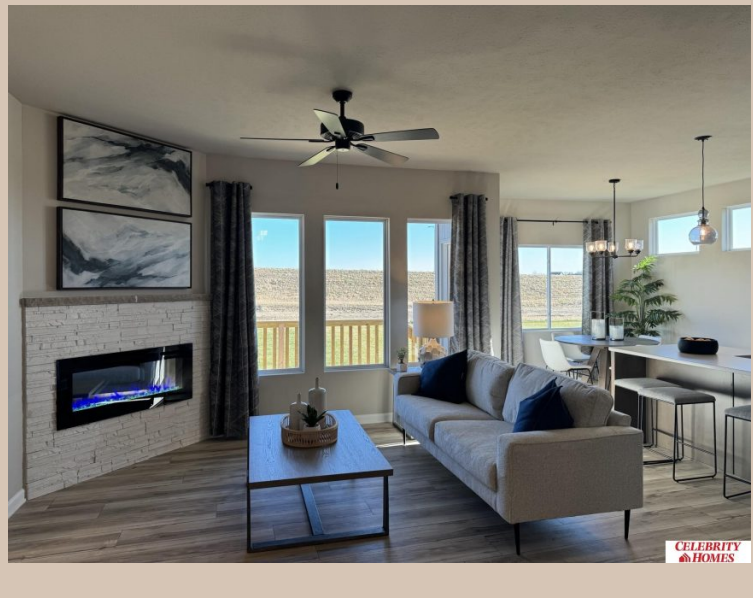


16920 Newport Avenue, Omaha, Ne 68116



Scan the code above with your mobile device or click it to go directly to the Celebrity Homes & Townhomes website for 16920 Newport Avenue, Omaha, Ne 68116

Details

Price : 380400
Style : 1.0 Story/Ranch
Floorplan : Jordan
Communities : Lakeview 168
Bedrooms : 3
Baths : 2
Sq Footage : 1920
Included : Welcome to The Jordan by Celebrity Homes. This Ranch Design offers 3 bedrooms on the main floor (2 on one side, 1 on the other)...with privacy for the Owner's Suite! The JORDAN Design has a spacious main floor Gathering Room leading into an Eat-In Island Kitchen and Dining Area. And with Raised Ceilings towering over 9', the main floor seems even more spacious. Plenty of room in the lower level for a Rec Room, additional Bedroom, and even another ¾ Bath! Owner's Suite is appointed with a walk-in closet, ¾ Privacy Bath Design with a Dual Vanity. Features of this 3 Bedroom, 2 Bath Home Include: 2 Car Garage with a Garage Door Opener, Refrigerator, Washer/Dryer Package, Quartz Countertops, Luxury Vinyl Panel Flooring (LVP) Package, Sprinkler System, Extended 2-10 Warranty Program, ¾ Bath Rough-In, Professionally Installed Blinds, and that's just the start! (Pictures of Model Home) Price may reflect promotional discounts, if applicable
Estimate Completion : 150 Days
School District : Bennington
Directions : From 168th & Ida St, Head South to Reddick. Turn right (West) into community. Visit model homes at Highland Hills for access to homes and Community Map.

Location