

10814 Sheffield Street, Omaha, Ne 68142



## Details

Price : 361400

Style : 1.0 Story/Ranch

Floorplan : Jordan

Communities : Deer Crest

Bedrooms : 3

Baths : 2

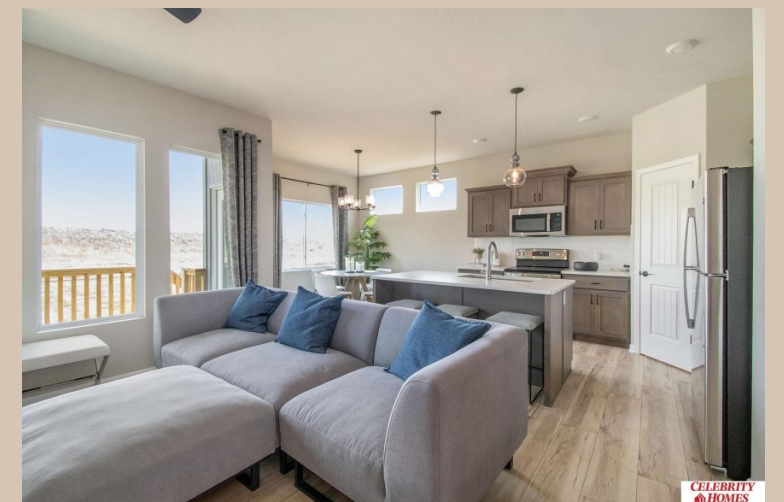
Sq Footage : 1879

Included : Welcome to The Jordan by Celebrity Homes. INTRODUCING our new exclusive "Welcoming Patio"! The perfect place to gather with family and neighbors, and it is more spacious than a front porch! This Ranch Design offers 3 bedrooms on the main floor (2 on one side, 1 on the other) With privacy for the Owner's Suite! The JORDAN Design has a spacious main floor Gathering Room leading into an Eat-In Island Kitchen and Dining Area. And with Raised Ceilings towering over 9', the main floor seems even more spacious. Need even more space, YOU GOT IT with a Finished Rec Room in the Basement. Owner's Suite is appointed with a walk-in closet, ¾ Privacy Bath Design with a Dual Vanity. Features of this 3 Bedroom, 2 Bath Home Includes: 2 Car Garage with a Garage Door Opener, Refrigerator, Washer/Dryer Package, Quartz Countertops, Luxury Vinyl Panel Flooring (LVP) Package, Sprinkler System, Extended 2-10 Warranty Program, ¾ Bath Rough-In, Professionally Installed Blinds, and that's just the start!

Estimate Completion : 120 Days

School District : Omaha

Directions : From State St turn South on 114th St. Turn left (east) onto Reynolds. Model home on the corner of 113th St and Reynolds St.



Scan the code above with your mobile device or click it to go directly to the Celebrity Homes & Townhomes website for 10814 Sheffield Street, Omaha, Ne 68142

Location

---