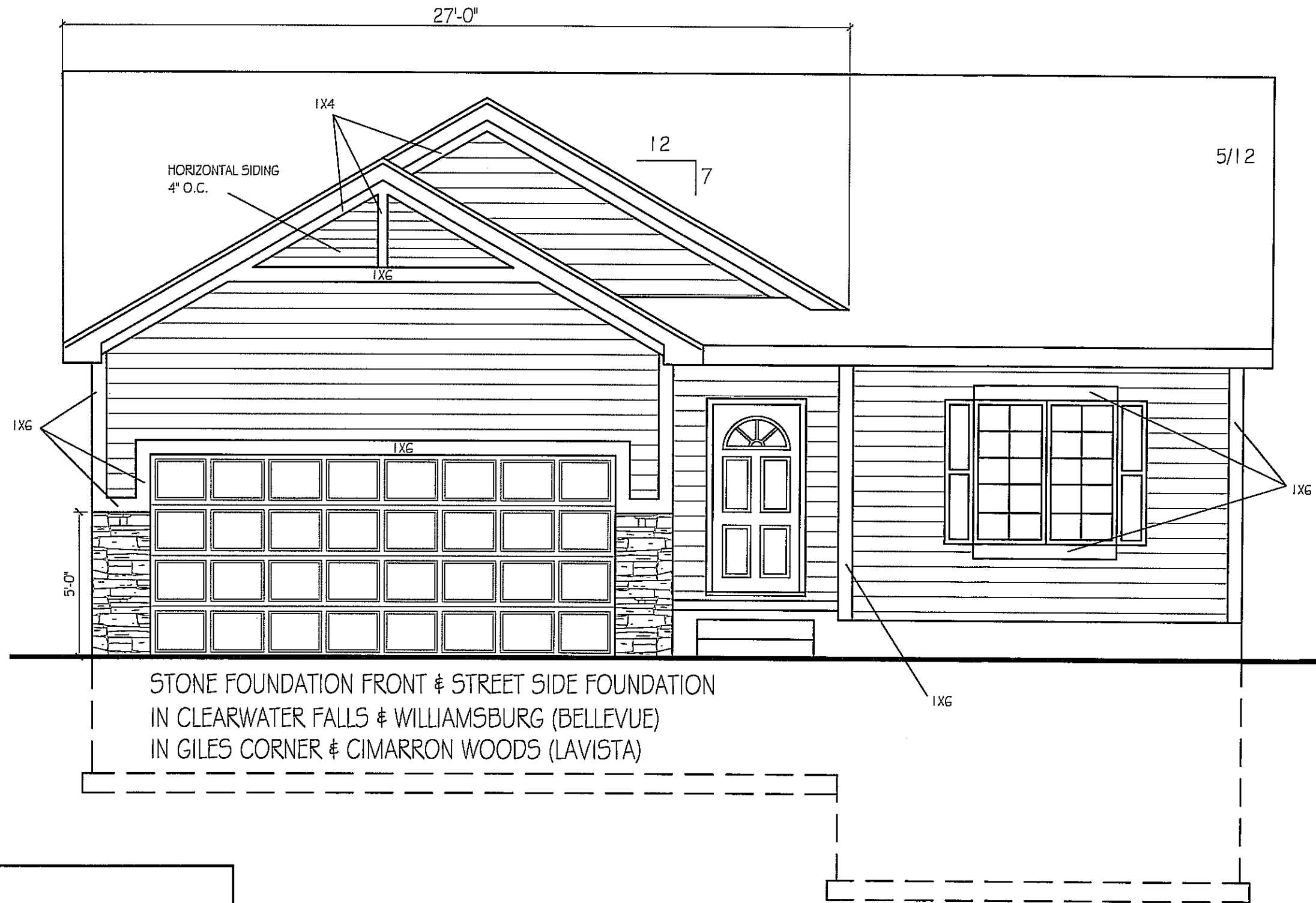


STONE FOUNDATION FRONT & STREET SIDE FOUNDATION
 IN CLEARWATER FALLS & WILLIAMSBURG (BELLEVUE)
 IN GILES CORNER & CIMARRON WOODS (LAVISTA)

NOTE:
 1. 7/16" HARDBOARD SIDING
 HORIZONTAL 6" O.C.
 2. 1X6 CORNER BOARDS @ FRONT

ELEV. #A

© CELEBRITY HOMES 2008 THESE DRAWINGS MAY NOT BE REPRODUCED IN ANY MANNER, EITHER IN WHOLE OR IN PART WITHOUT WRITTEN PERMISSION OF CELEBRITY HOMES.
 PLAN NAME: ASHTON
 FRONT ELEVATION
 SCALE: 1/4" = 1'-0"
 SHEET: 1/5
 C.C. 07/22/2009 2:32 PM | 200 RANCH.dwg
CELEBRITY HOMES
 Homes ★ Villas ★ Townhomes



NOTE:

1. 7/16" HARDBOARD SIDING
HORIZONTAL 6" O.C.
2. 1X6 CORNER BOARDS @ FRONT

ELEV. #B

© CELEBRITY HOMES 2008. THESE DRAWINGS MAY NOT BE REPRODUCED IN ANY MANNER, EITHER IN WHOLE OR IN PART WITHOUT WRITTEN PERMISSION OF CELEBRITY HOMES.

PLAN NAME:

ASHTON

FRONT ELEVATION

SCALE: 1/4" = 1'-0"

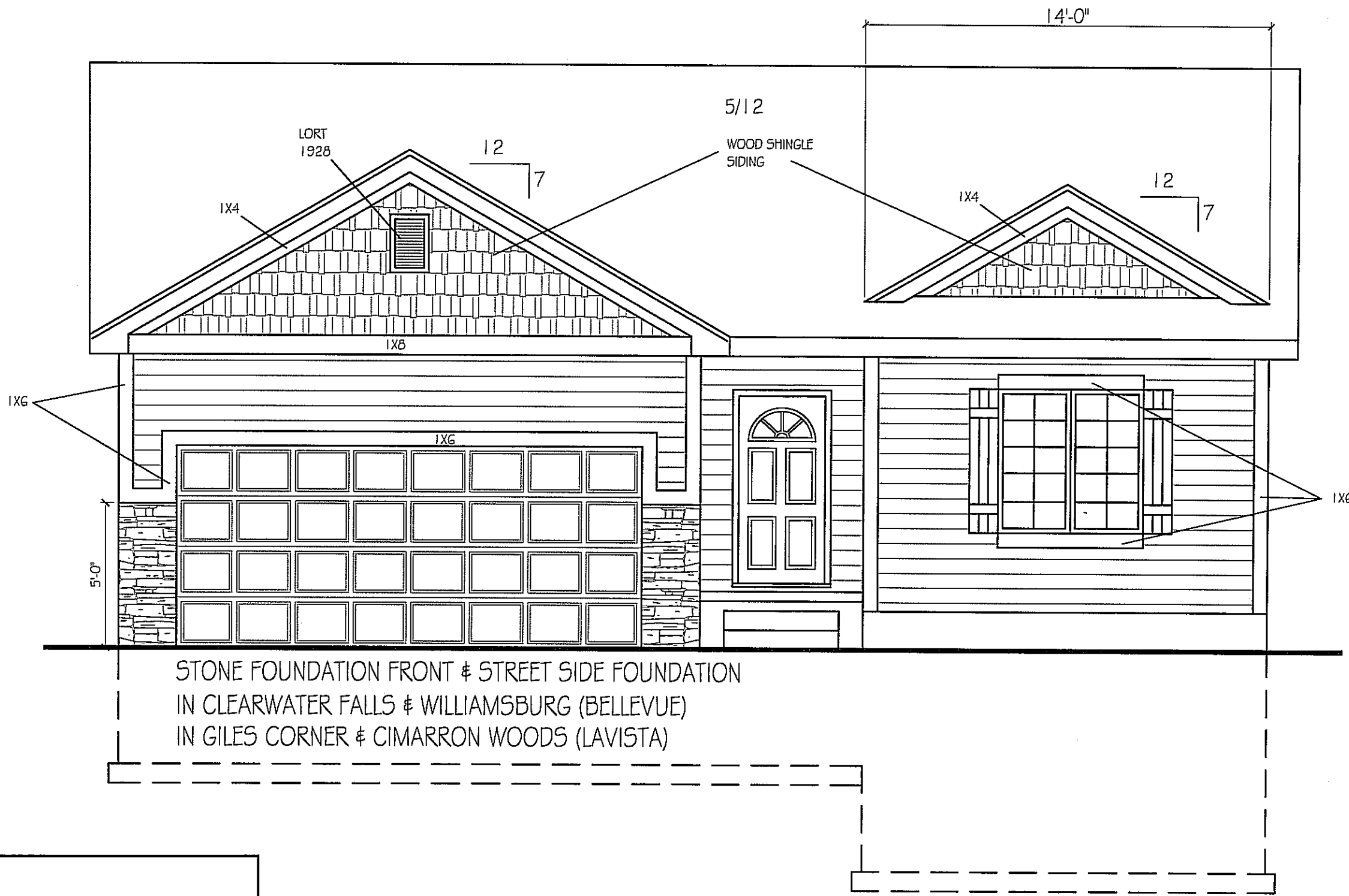
REVISIONS:

SHEET:

1

5

C.C. C7/22/2009 2:32 PM I 200 RANCH.dwg



STONE FOUNDATION FRONT & STREET SIDE FOUNDATION
 IN CLEARWATER FALLS & WILLIAMSBURG (BELLEVUE)
 IN GILES CORNER & CIMARRON WOODS (LAVISTA)

NOTE:
 1. 7/16" HARDBOARD SIDING
 HORIZONTAL 6" O.C.
 2. 1X6 CORNER BOARDS @ FRONT

ELEV. #C