

STONE FOUNDATION FRONT & STREET SIDE FOUNDATION
 IN CLEARWATER FALLS & WILLIAMSBURG (BELLEVUE)
 IN GILES CORNER & CIMARRON WOODS (LAVISTA)

- NOTE:
1. 7/16" HARDBOARD SIDING
HORIZONTAL 6" O.C.
 2. 1X6 CORNER BOARDS @ FRONT

ELEV. #A

© CELEBRITY HOMES 2008. THESE DRAWINGS MAY NOT BE REPRODUCED IN ANY MANNER, EITHER IN WHOLE OR IN PART, WITHOUT WRITTEN PERMISSION OF CELEBRITY HOMES.

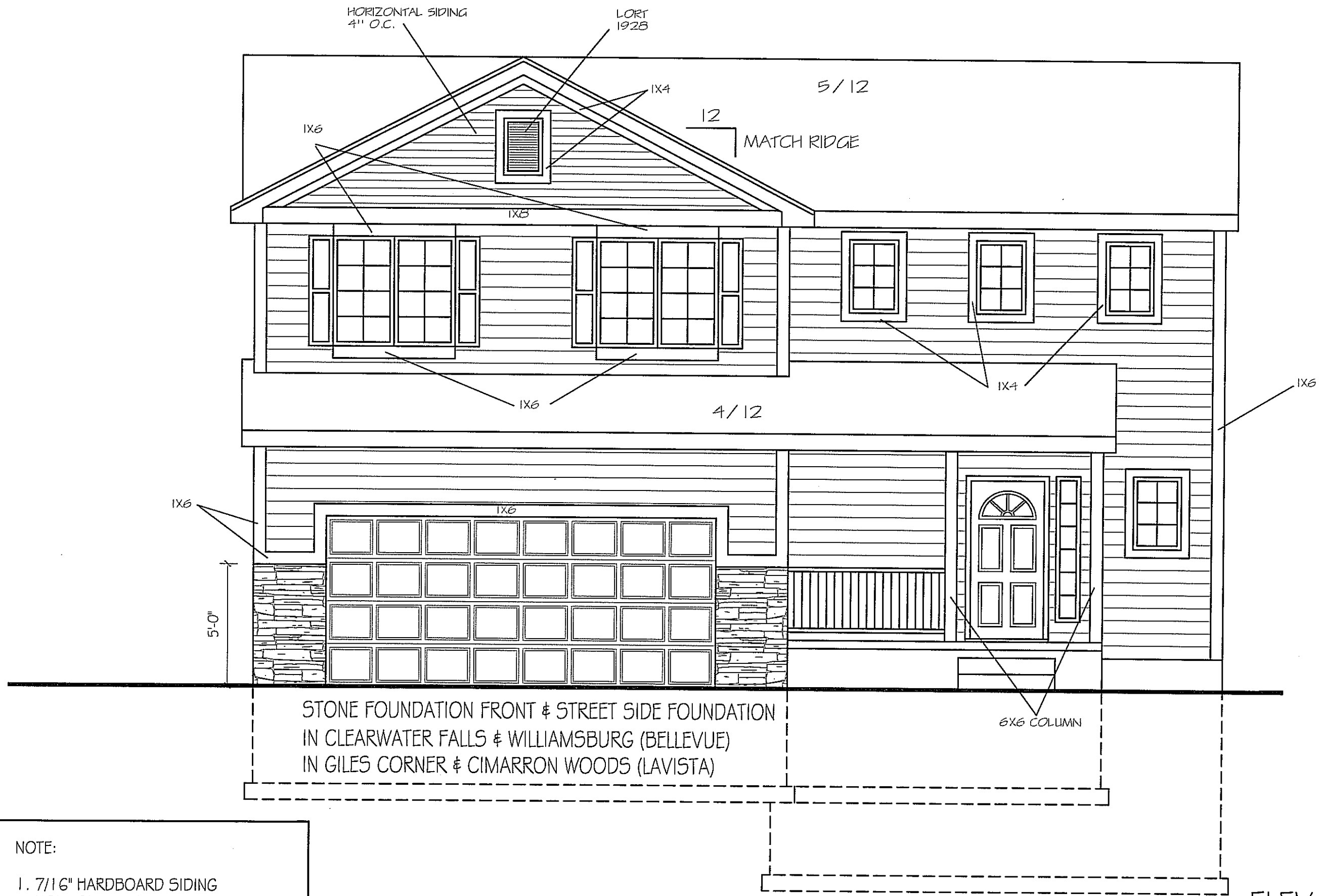
CELEBRITY HOMES
 Homes • Villas • Townhomes

PLAN NAME: TACOMA
 FRONT ELEVATION:
 SCALE: 1/4" = 1'-0"

C.C. C9/30/2009 11:26 AM 1886 TACOMA 2-STORY.dwg

REVISIONS:

SHEET: 1/6



STONE FOUNDATION FRONT & STREET SIDE FOUNDATION
 IN CLEARWATER FALLS & WILLIAMSBURG (BELLEVUE)
 IN GILES CORNER & CIMARRON WOODS (LAVISTA)

NOTE:
 1. 7/16" HARDBOARD SIDING
 HORIZONTAL 6" O.C.
 2. 1X6 CORNER BOARDS @ FRONT

ELEV. #B

© CELEBRITY HOMES 2008. THESE DRAWINGS MAY NOT BE REPRODUCED IN ANY MANNER, EITHER IN WHOLE OR IN PART WITHOUT WRITTEN PERMISSION OF CELEBRITY HOMES.

FRONT ELEVATION
 SCALE: 1/4" = 1'-0"

TACOMA

PLAN NAME:
 C.C. C10/2/2009 3:26 PM I 886 TACOMA 2 -STORY.dwg

REVISIONS:

SHEET:
 6

FRONT ELEVATION
SCALE: 1/4" = 1'-0"

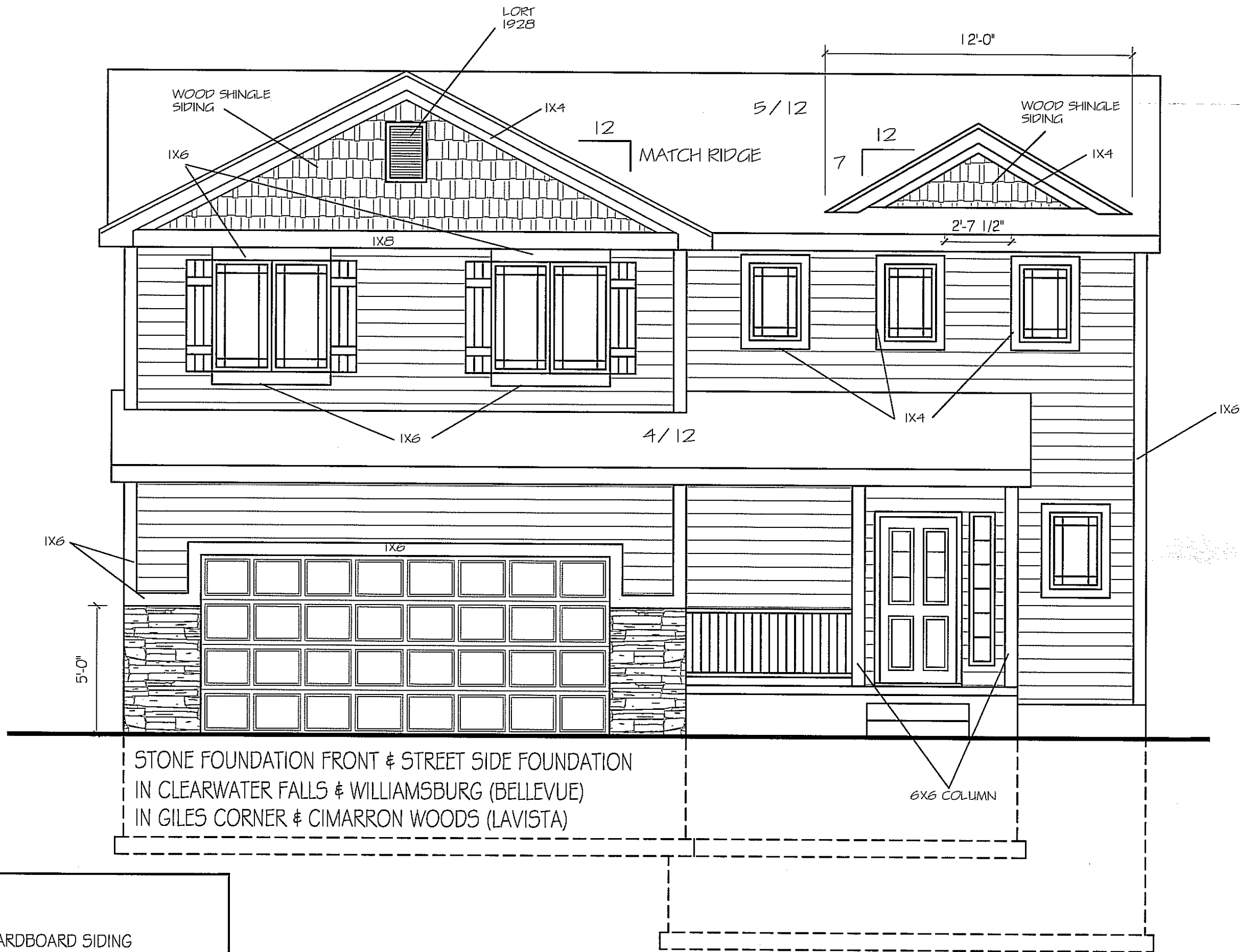
TACOMA

- 12/21/2010 10:31 AM 1978 TACOMA 2-STORY.dwg

REVISIONS:

SHEET:

1 / 6



NOTE:

1. 7/16" HARDBOARD SIDING HORIZONTAL 6" O.C.
2. 1X6 CORNER BOARDS @ FRONT

ELEV. #C