

NOTE:
 1. 7/16" HARDBOARD SIDING
 HORIZONTAL 6" O.C.
 2. 1X6 CORNER BOARDS @ FRONT

ELEV. #A

© CELEBRITY HOMES 2008 THESE DRAWINGS MAY NOT BE REPRODUCED IN ANY MANNER, EITHER IN WHOLE OR IN PART WITHOUT WRITTEN PERMISSION OF CELEBRITY HOMES.

FRONT ELEVATION
 SCALE: 1/4" = 1'-0"

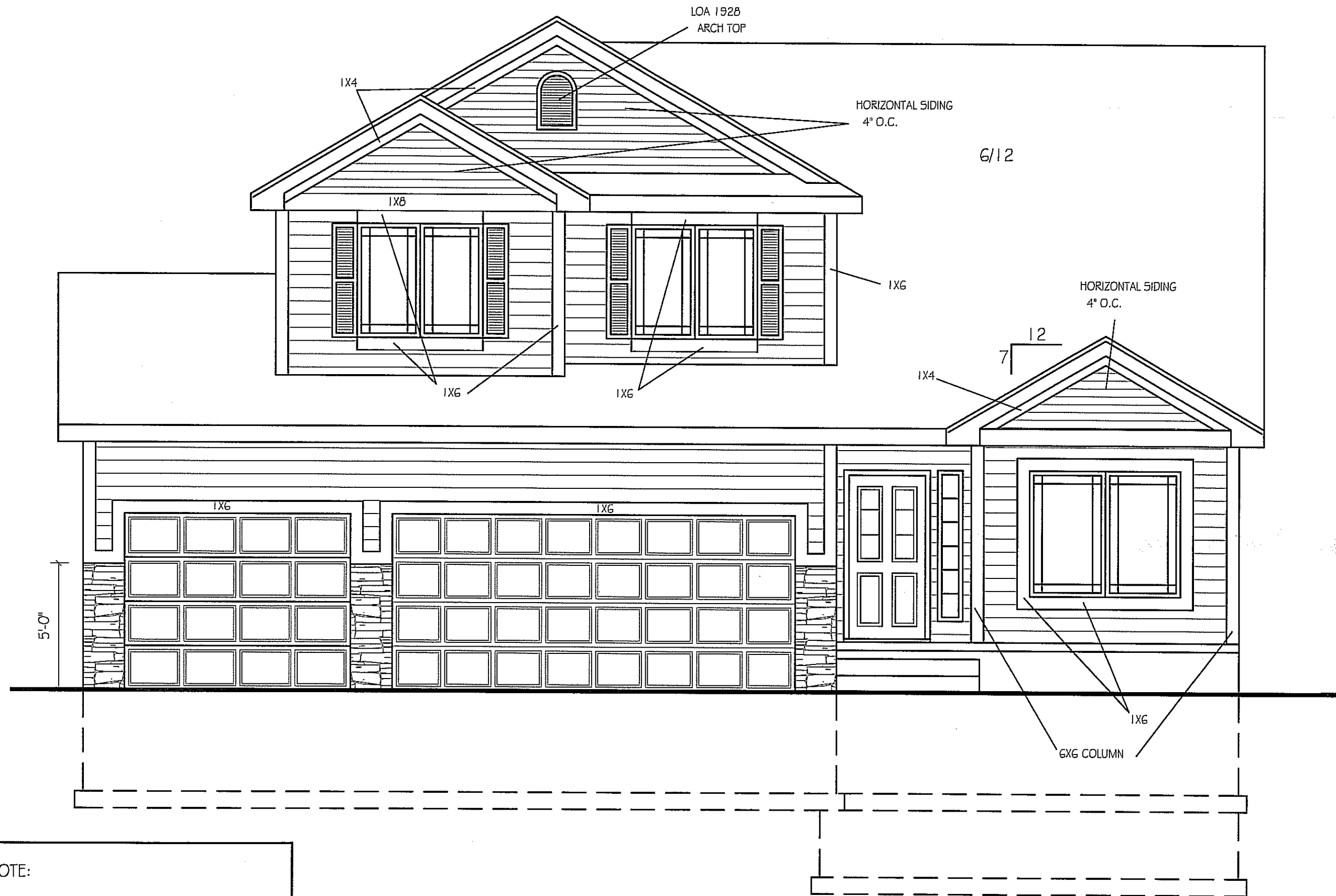
DANVILLE

C.C. C9/23/2010 2:11 PM2240 DANVILLE 2-STORY.dwg

REVISIONS:

SHEET:

1
 6



6/12

12
7

5'-0"

NOTE:
 1. 7/16" HARDBOARD SIDING
 HORIZONTAL 6" O.C.
 2. 1X6 CORNER BOARDS @ FRONT

ELEV. #B

© CELEBRITY HOMES 2008 THESE DRAWINGS MAY NOT BE REPRODUCED IN ANY MANNER, EITHER IN WHOLE OR IN PART WITHOUT WRITTEN PERMISSION OF CELEBRITY HOMES.

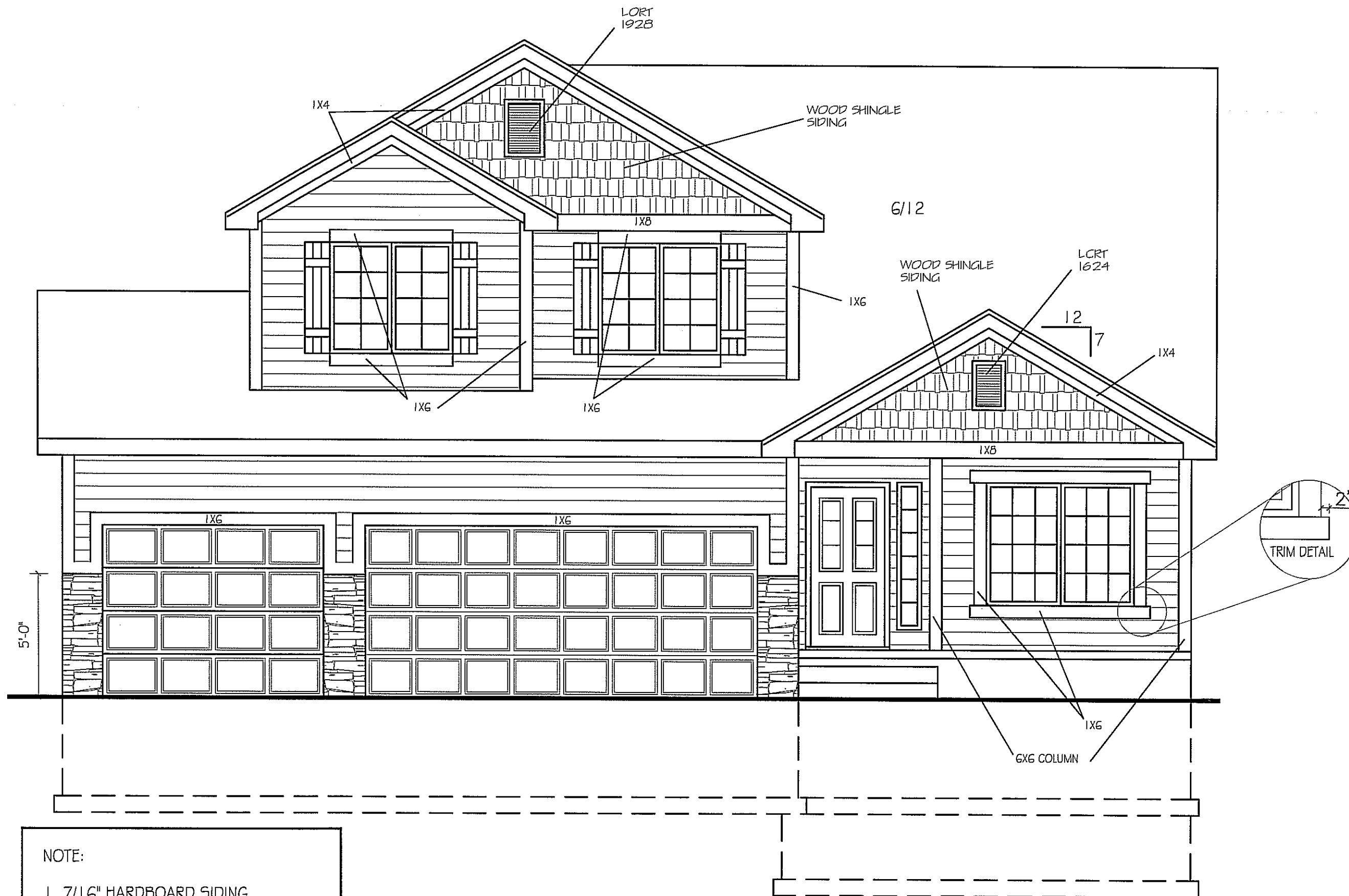
FRONT ELEVATION
 SCALE: 1/4" = 1'-0"

PLAN NAME:
 DANVILLE

- 12/21/2010 10:38 AM 2240 DANVILLE 2-STORY.dwg

REVISIONS:

SHEET:
 1



NOTE:

1. 7/16" HARDBOARD SIDING HORIZONTAL 6" O.C.
2. 1X6 CORNER BOARDS @ FRONT

ELEV. #C

© CELEBRITY HOMES 2008 THESE DRAWINGS MAY NOT BE REPRODUCED IN ANY MANNER, EITHER IN WHOLE OR IN PART WITHOUT WRITTEN PERMISSION OF CELEBRITY HOMES.

CELEBRITY HOMES
 Homes • Villas • Townhomes

PLAN NAME: DANVILLE
 FRONT ELEVATION
 SCALE: 1/4" = 1'-0"
 C.C. C9/23/2010 2:11 PM2240 DANVILLE 2-STORY.dwg

REVISIONS:

SHEET: 1/6