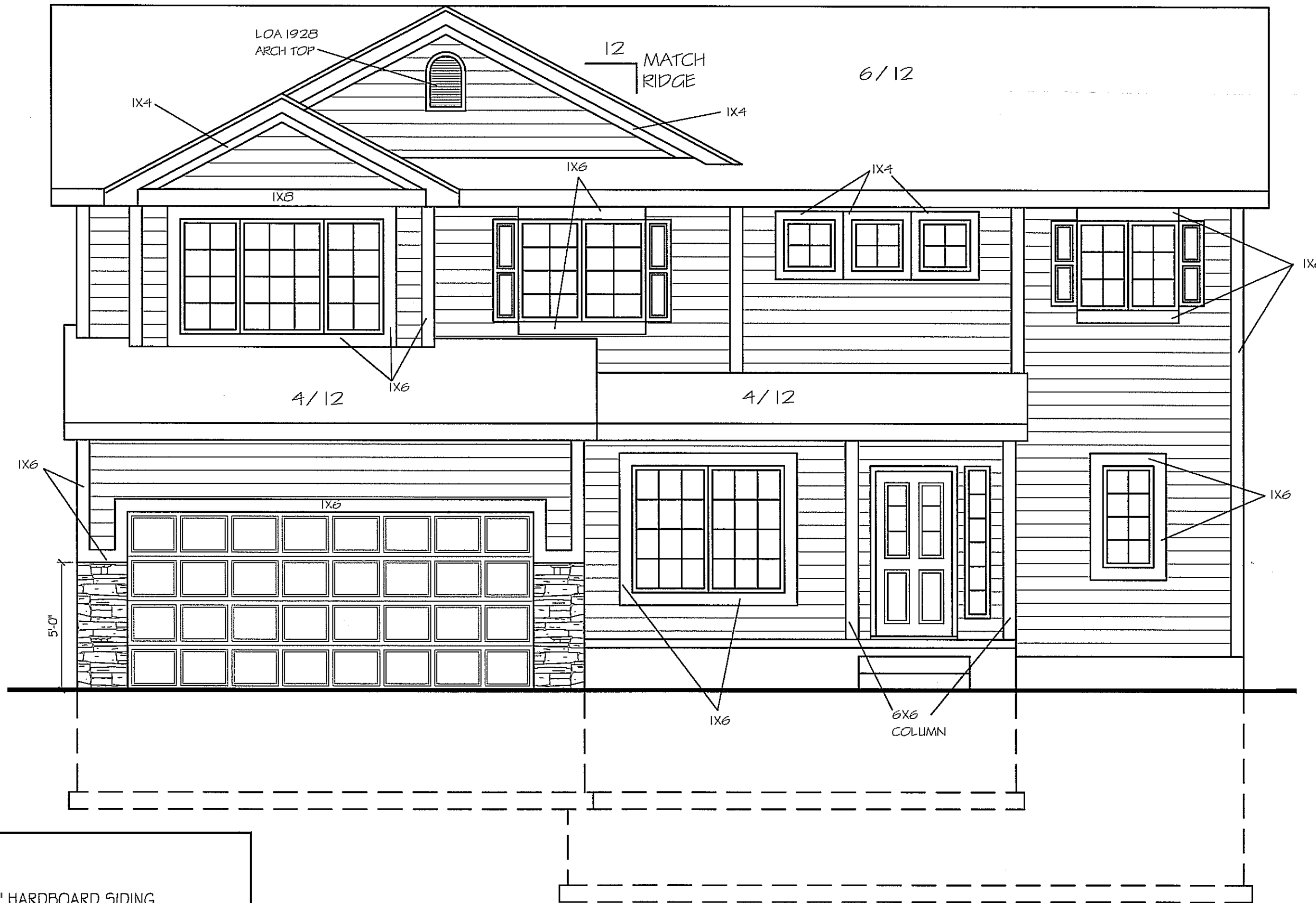


NOTE:
1. 7/16" HARDBOARD SIDING
HORIZONTAL 6" O.C.
2. 1X6 CORNER BOARDS @ FRONT

ELEV. #A



NOTE:

- 7/16" HARDBOARD SIDING HORIZONTAL 6" O.C.
- IX6 CORNER BOARDS @ FRONT

ELEV. #B

© CELEBRITY HOMES 2008 THESE DRAWINGS MAY NOT BE REPRODUCED IN ANY MANNER, EITHER IN WHOLE OR IN PART WITHOUT WRITTEN PERMISSION OF CELEBRITY HOMES.

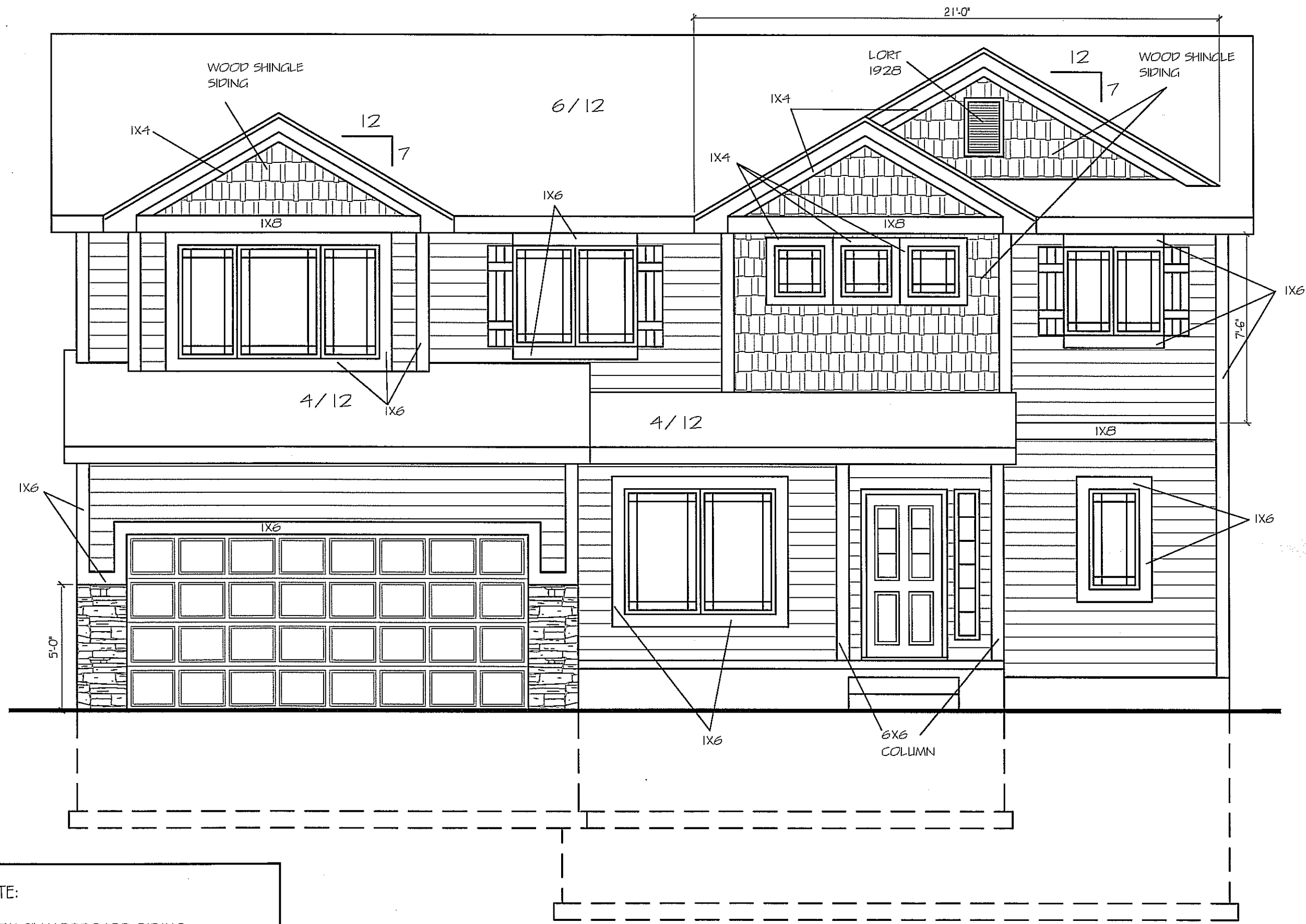
FRONT ELEVATION
SCALE: 1/4" = 1'-0"

PLAN NAME:
BRADFORD

C.C. C9/23/2010 2:13 PM2249 BRADFORD 2-STORY.dwg

REVISIONS:

SHEET:
1 / 6



NOTE:

- 1. 7/16" HARDBOARD SIDING HORIZONTAL 6" O.C.
- 2. 1X6 CORNER BOARDS @ FRONT

ELEV. #C

© CELEBRITY HOMES 2008 THESE DRAWINGS MAY NOT BE REPRODUCED IN ANY MANNER, EITHER IN WHOLE OR IN PART WITHOUT WRITTEN PERMISSION OF CELEBRITY HOMES.

FRONT ELEVATION
SCALE: 1/4" = 1'-0"

PLAN NAME:
BRADFORD

-12/21/2010 10:41 AM 2249 BRADFORD 2-STORY.dwg

REVISIONS:

SHEET:
1 / 6