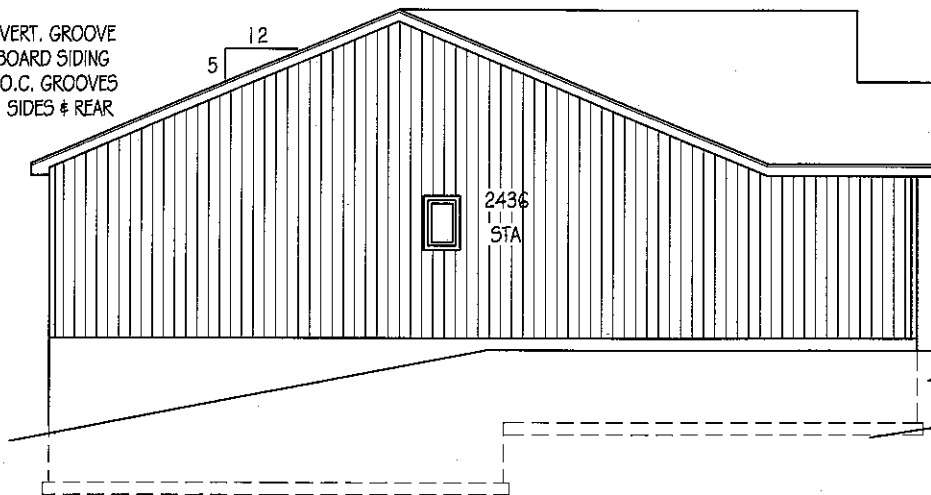
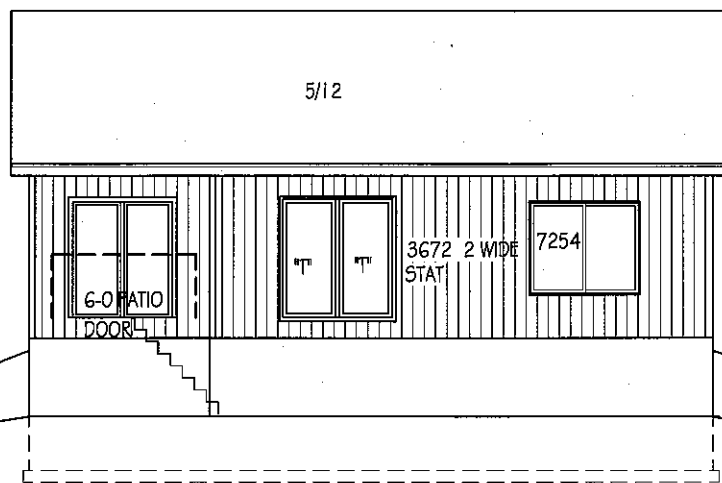


7/16" VERT. GROOVE
HARDBOARD SIDING
8" O.C. GROOVES
SIDES & REAR



LEFT SIDE ELEVATION

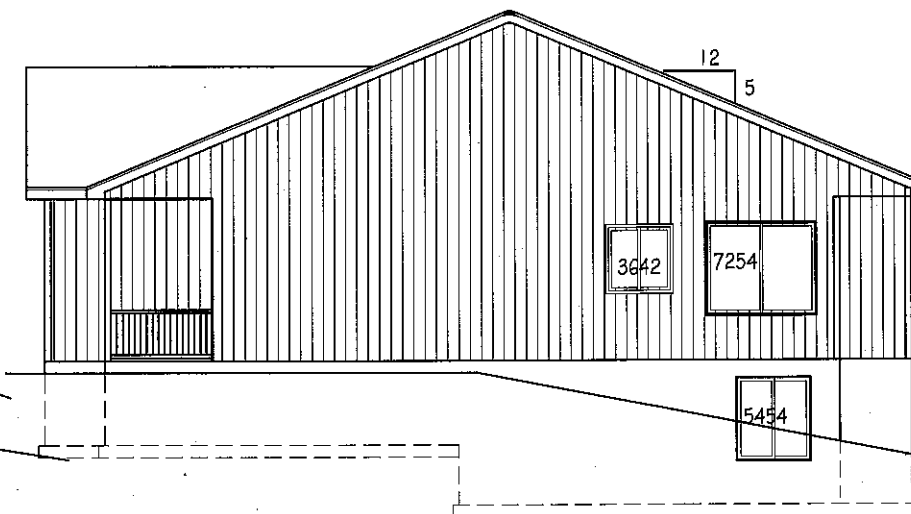
SCALE: 3/32" = 1'-0"



REAR ELEVATION

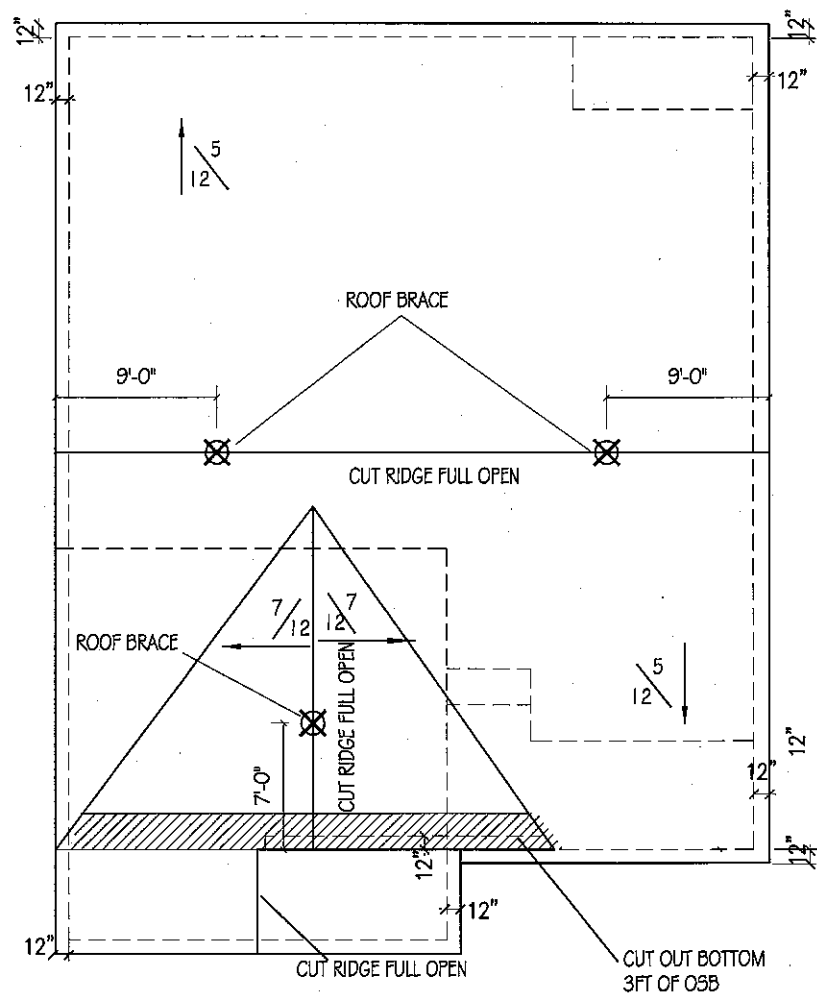
SCALE: 3/32" = 1'-0"

4X4 POSTS ON
8"X42" CONC.
PIERS.



RIGHT SIDE ELEVATION

SCALE: 3/32" = 1'-0"

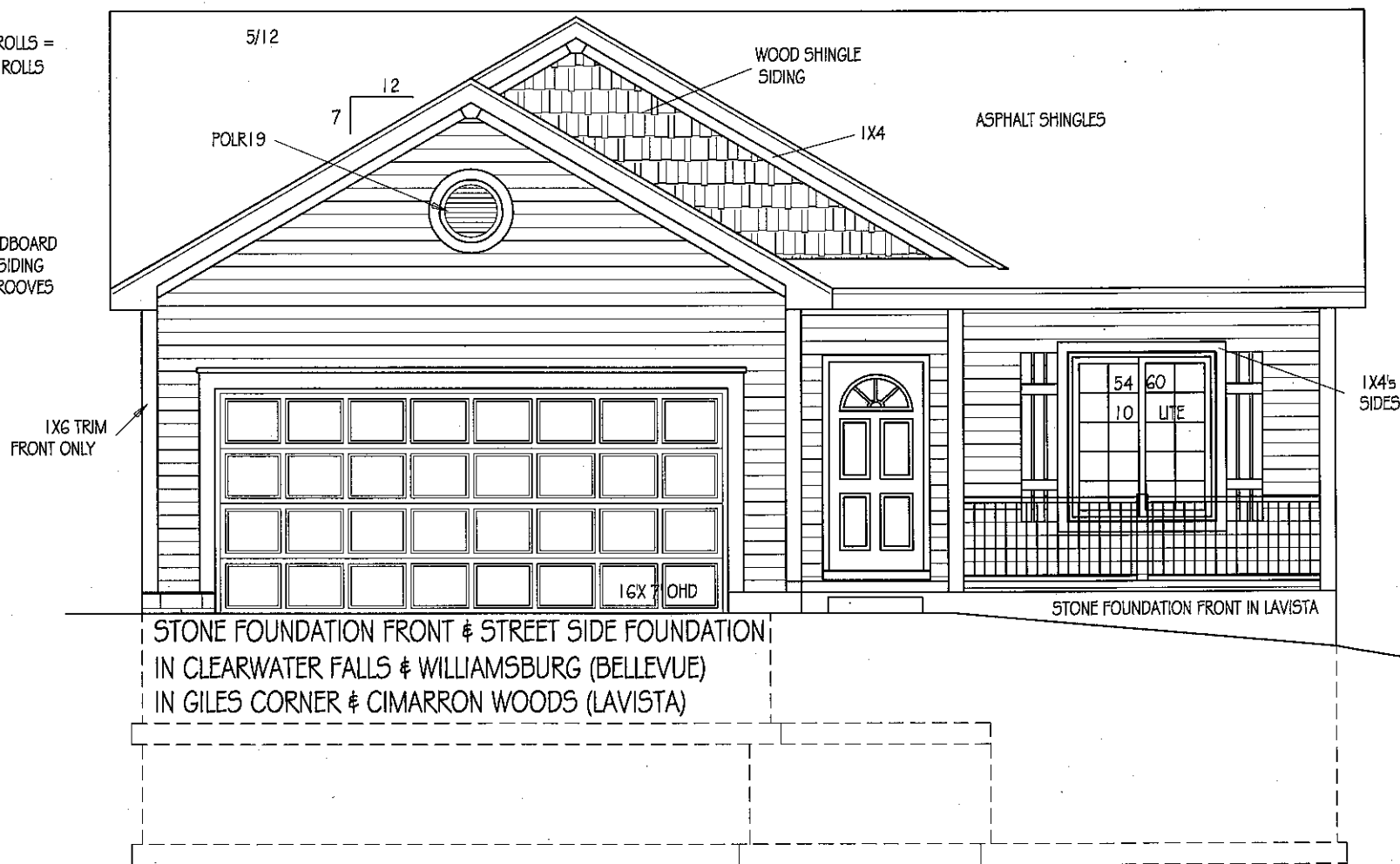


ROOF PLAN

SCALE: 3/32" = 1'-0"

RIDGE VENT ROLLS =
2.0, SEND 3 ROLLS

7/16" HARDBOARD
COTTAGE LAP SIDING
W/ 6" O.C. GROOVES



ELEVATION A

SCALE: 3/16" = 1'-0"

PORCH

STONE FOUNDATION FRONT & STREET SIDE FOUNDATION
IN CLEARWATER FALLS & WILLIAMSBURG (BELLEVUE)
IN GILES CORNER & CIMARRON WOODS (LAVISTA)

© CELEBRITY HOMES 2008 THESE DRAWINGS MAY NOT BE REPRODUCED IN ANY MANNER, EITHER IN WHOLE OR IN PART WITHOUT WRITTEN PERMISSION OF CELEBRITY HOMES.

ELEVATIONS

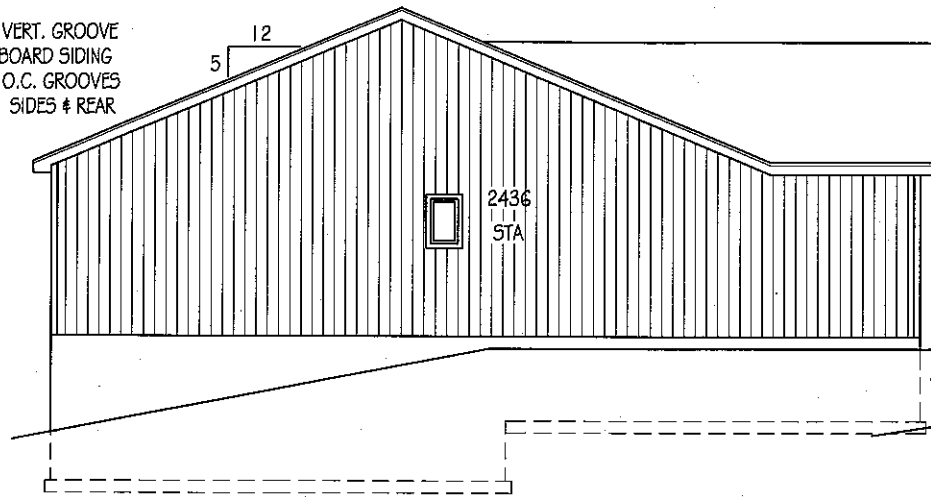
DAYTON

PLAN NAME:

REVISIONS:

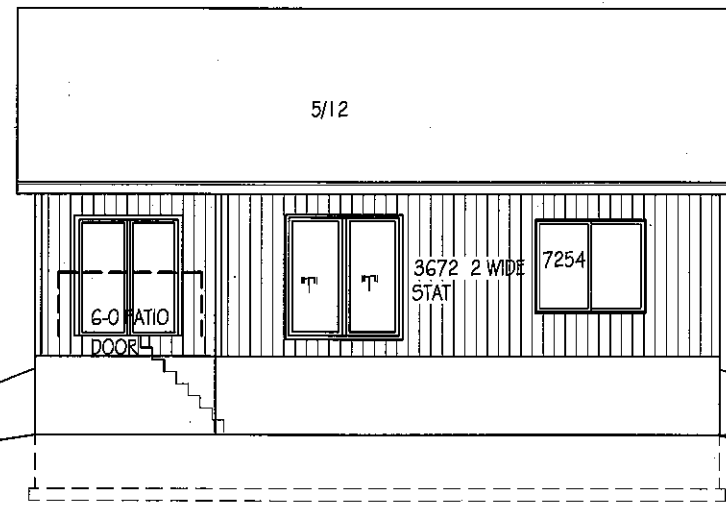
SHEET:

7/16" VERT. GROOVE
HARDBOARD SIDING
8" O.C. GROOVES
SIDES & REAR



LEFT SIDE ELEVATION

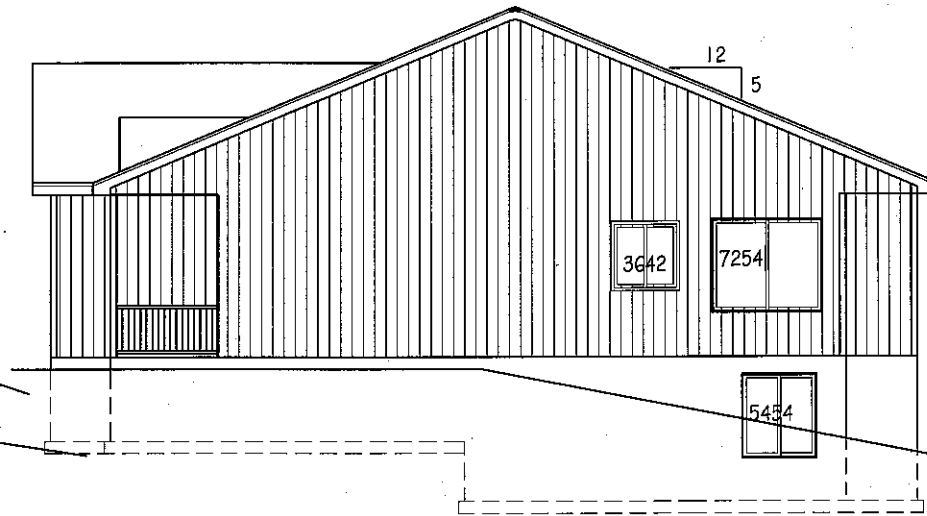
SCALE: 3/32" = 1'-0"



REAR ELEVATION

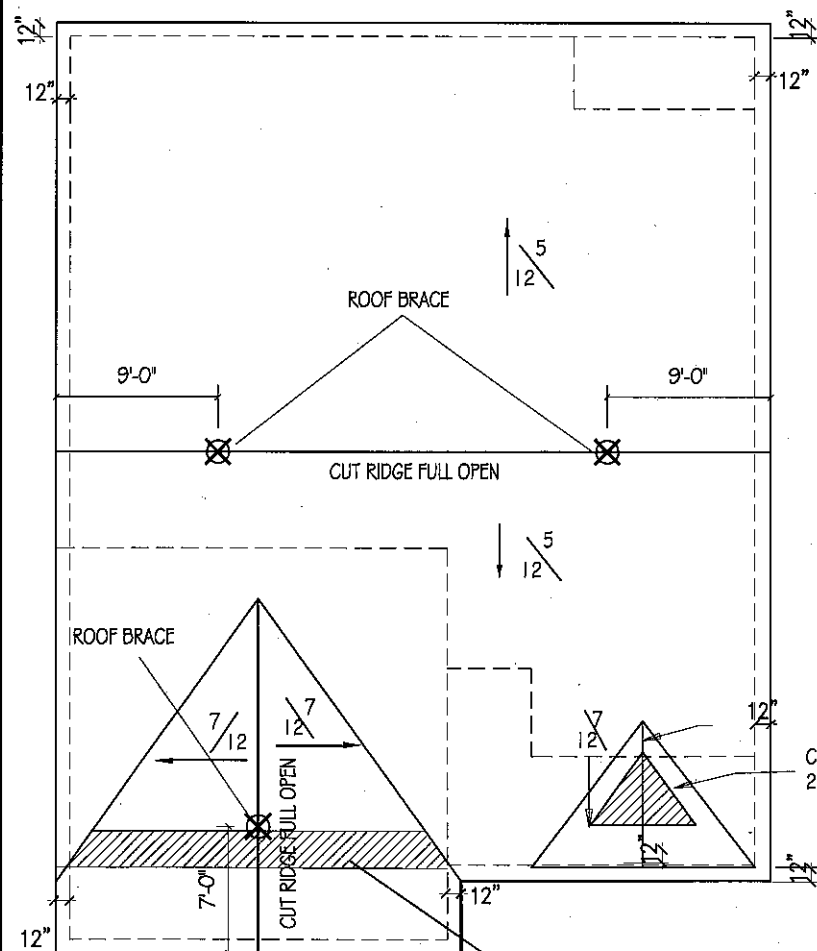
SCALE: 3/32" = 1'-0"

4X4 POSTS ON
8"X42" CONC.
PIERS.



RIGHT SIDE ELEVATION

SCALE: 3/32" = 1'-0"

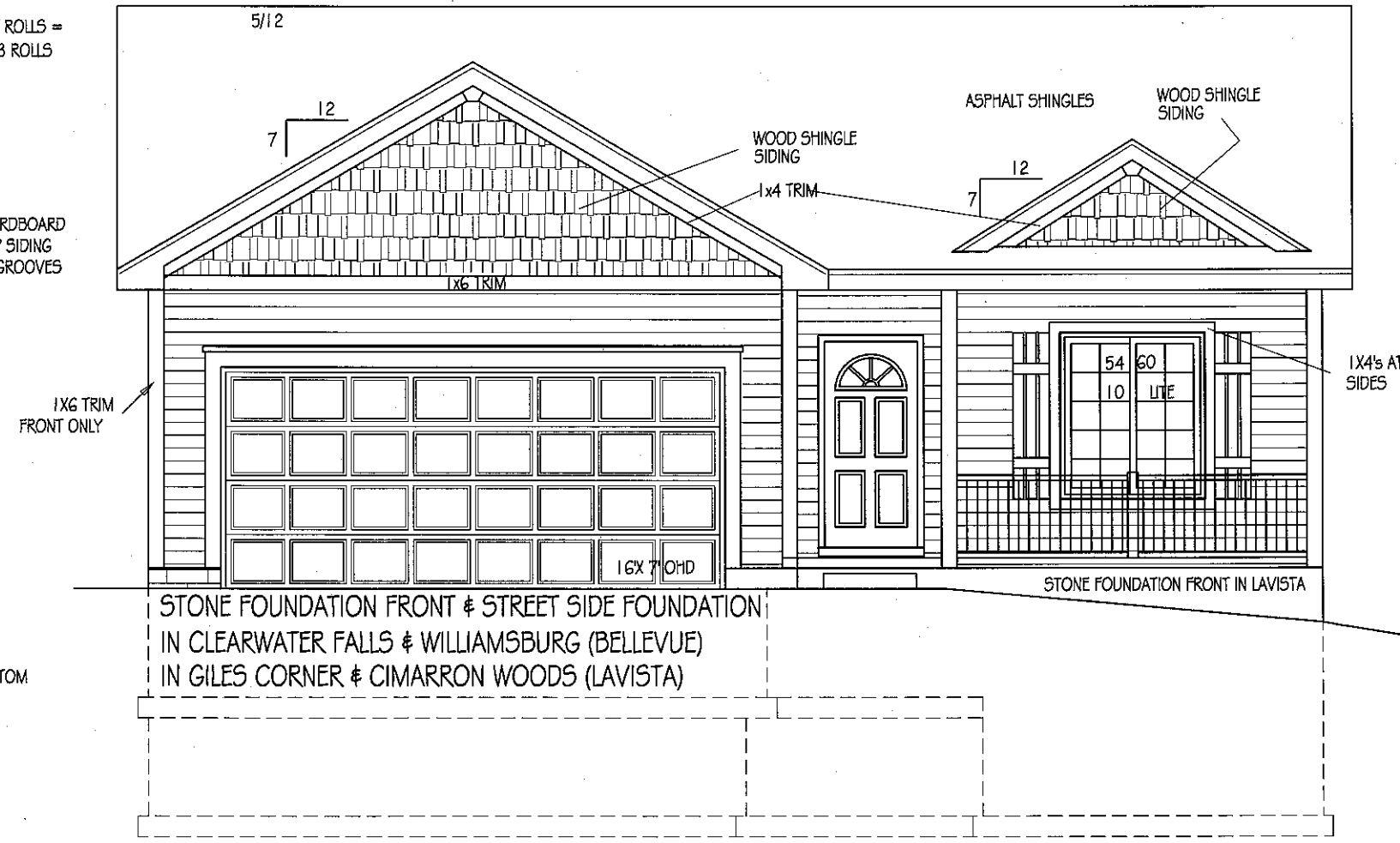


ROOF PLAN

SCALE: 3/32" = 1'-0"

RIDGE VENT ROLLS =
2.0, SEND 3 ROLLS

7/16" HARDBOARD
COTTAGE LAP SIDING
W/ 6" O.C. GROOVES



ELEVATION B

SCALE: 3/16" = 1'-0"

PORCH

© CELEBRITY HOMES 2008. THESE DRAWINGS MAY NOT BE REPRODUCED IN ANY MANNER, EITHER IN WHOLE OR IN PART WITHOUT WRITTEN PERMISSION OF CELEBRITY HOMES.