

STONE FOUNDATION FRONT & STREET SIDE FOUNDATION  
 IN CLEARWATER FALLS & WILLIAMSBURG (BELLEVUE)  
 IN GILES CORNER & CIMARRON WOODS (LAVISTA)

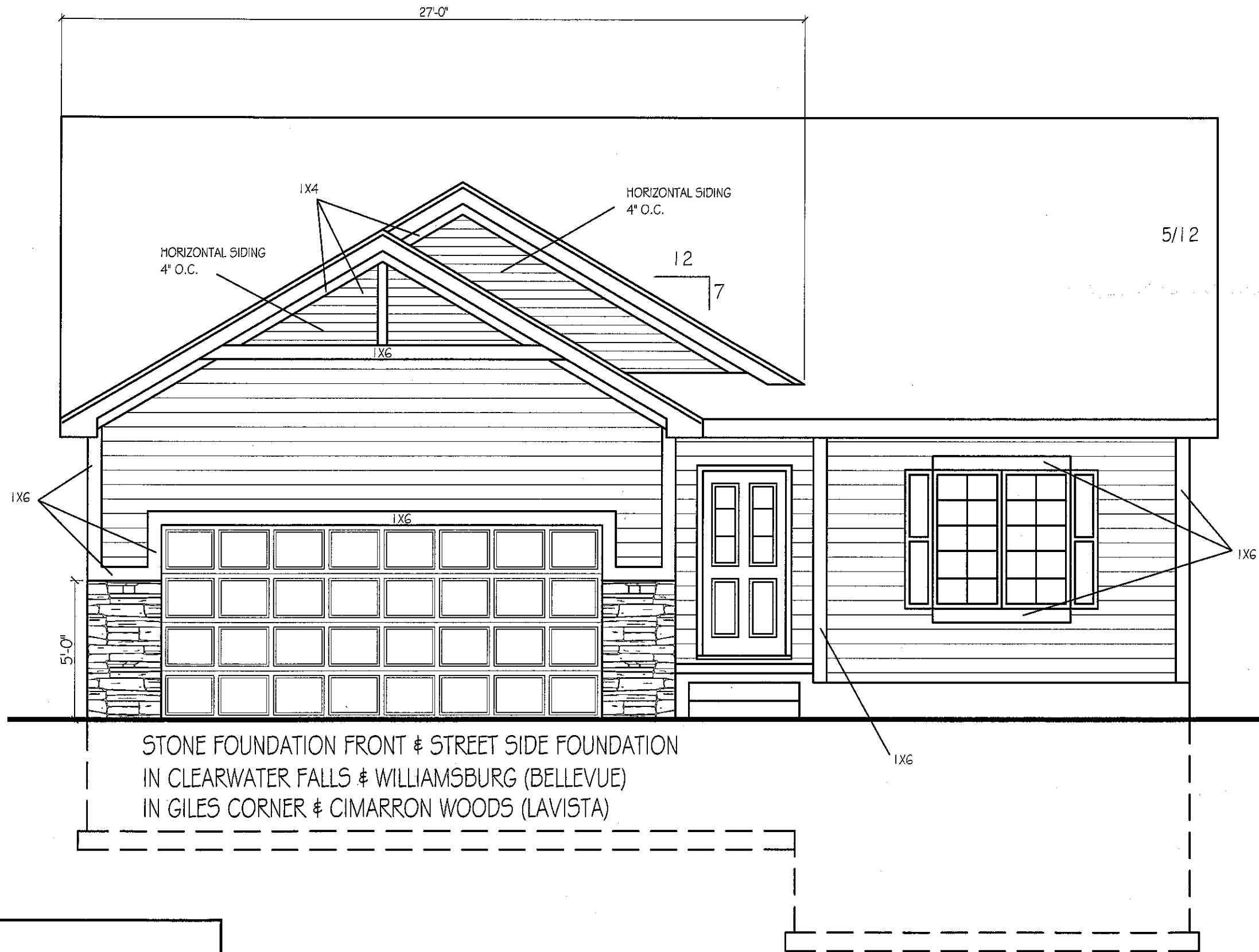
NOTE:  
 1. 7/16" HARDBOARD SIDING  
 HORIZONTAL 6" O.C.  
 2. 1X6 CORNER BOARDS @ FRONT

ELEV. #A

© CELEBRITY HOMES 2008. THESE DRAWINGS MAY NOT BE REPRODUCED IN ANY MANNER, EITHER IN WHOLE OR IN PART WITHOUT WRITTEN PERMISSION OF CELEBRITY HOMES.

PLAN NAME: CONCORD	FRONT ELEVATION SCALE: 1/4" = 1'-0"
REVISIONS:	
SHEET: 1	5

-4/13/2011 3:28 PM CONCORD.dwg



STONE FOUNDATION FRONT & STREET SIDE FOUNDATION  
 IN CLEARWATER FALLS & WILLIAMSBURG (BELLEVUE)  
 IN GILES CORNER & CIMARRON WOODS (LAVISTA)

NOTE:

1. 7/16" HARDBOARD SIDING  
HORIZONTAL 6" O.C.
2. 1X6 CORNER BOARDS @ FRONT

ELEV. #B

© CELEBRITY HOMES 2008. THESE DRAWINGS MAY NOT BE REPRODUCED IN ANY MANNER, EITHER IN WHOLE OR IN PART WITHOUT WRITTEN PERMISSION OF CELEBRITY HOMES.

**CELEBRITY HOMES**  
 Homes • Villas • Townhomes

FRONT ELEVATION  
 SCALE: 1/4" = 1'-0"

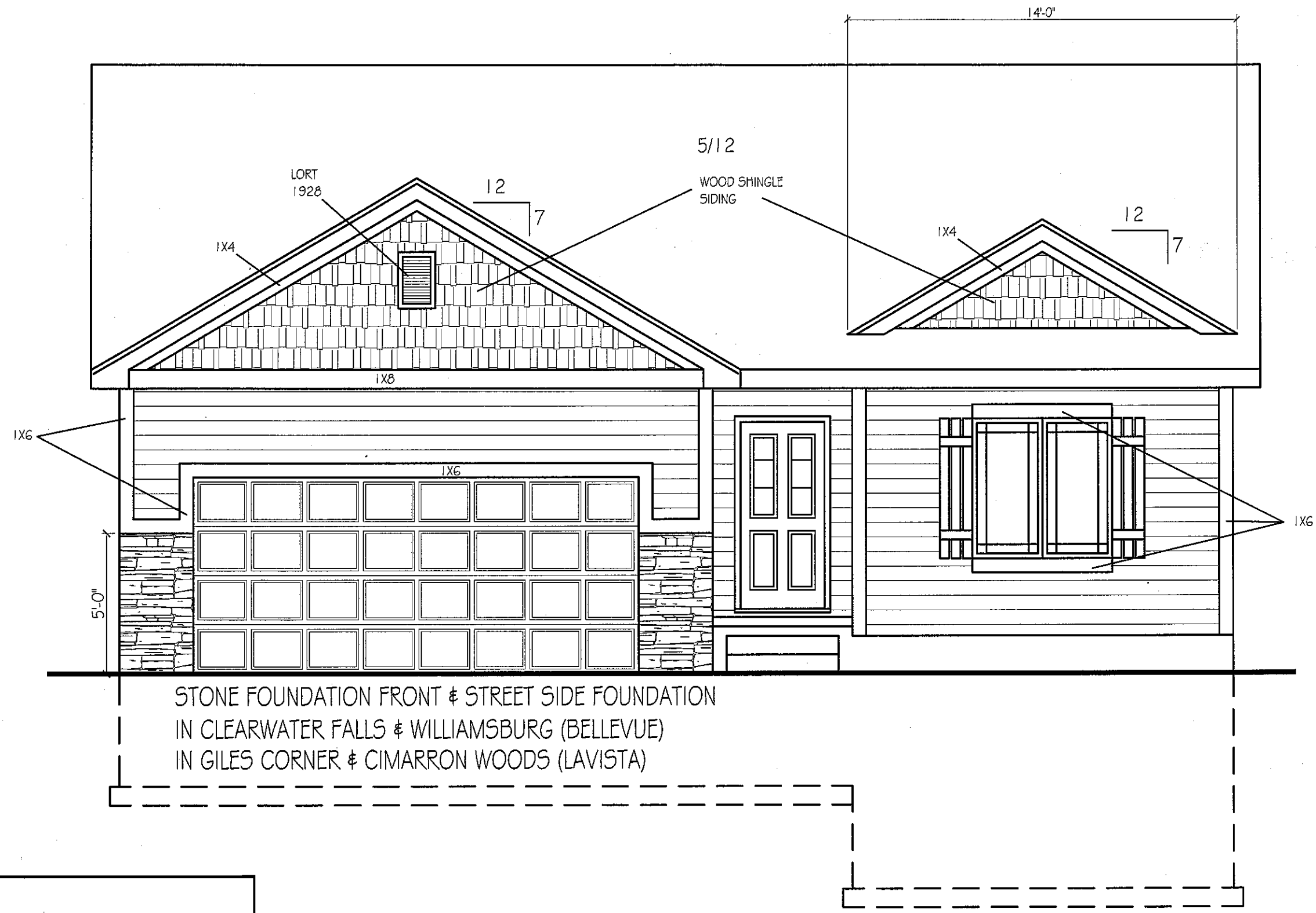
PLAN NAME:  
 CONCORD

REVISIONS:

SHEET:

5

C.C. C9/23/2010 3:03 PM CONCORD2.dwg



NOTE:  
 1. 7/16" HARDBOARD SIDING  
 HORIZONTAL 6" O.C.  
 2. 1X6 CORNER BOARDS @ FRONT

ELEV. #C

© CELEBRITY HOMES 2008. THESE DRAWINGS MAY NOT BE REPRODUCED IN ANY MANNER, EITHER IN WHOLE OR IN PART WITHOUT WRITTEN PERMISSION OF CELEBRITY HOMES.

FRONT ELEVATION  
 SCALE: 1/4" = 1'-0"

PLAN NAME:  
 CONCORD

REVISIONS:

SHEET:

1  
 5

C.C. C9/23/2010 3:03 PM CONCORD2.dwg