

## EXTERIOR PAINT COLOR RESTRICTIONS

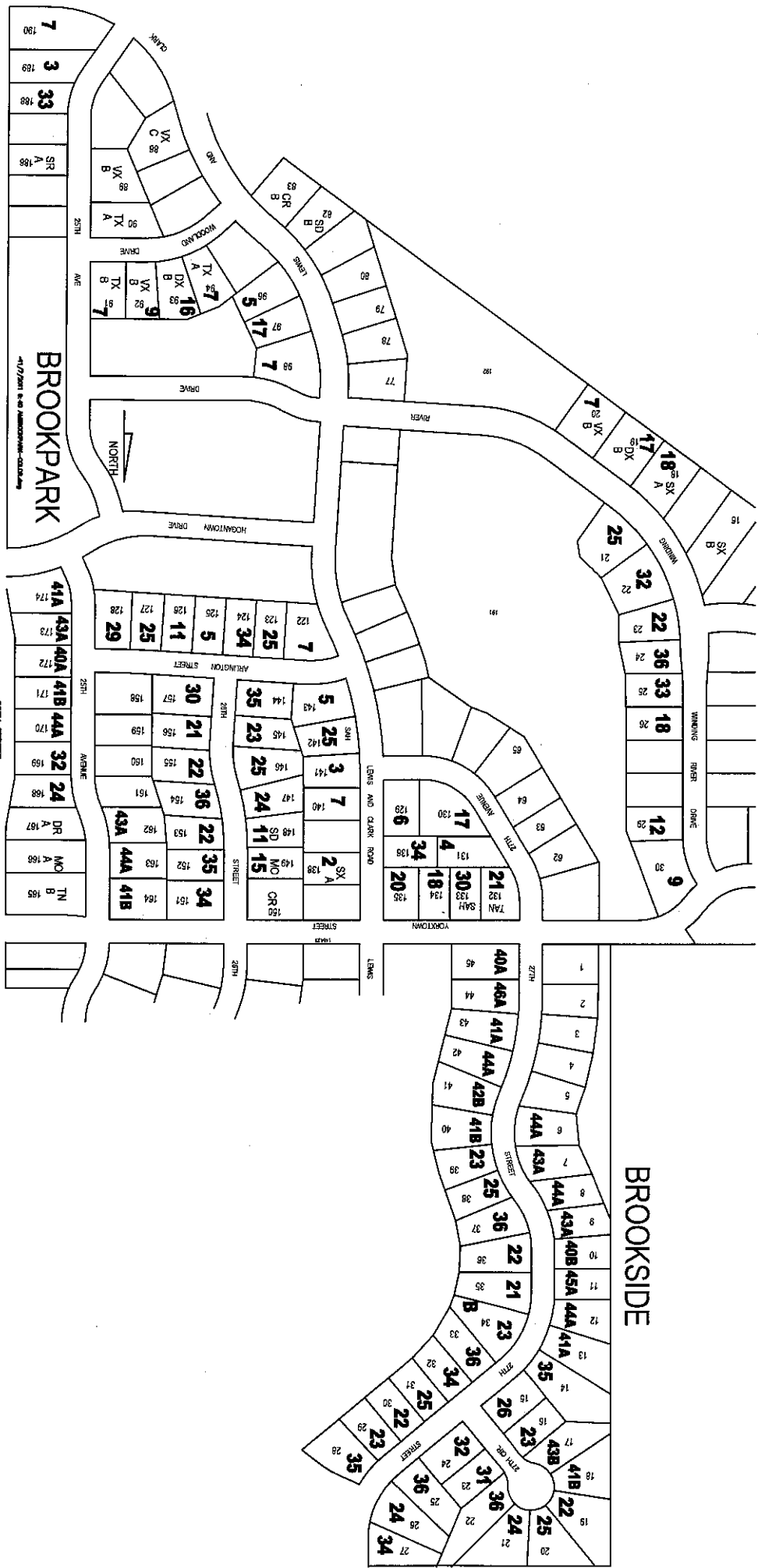
5/27/2011

*In our continual effort to build quality communities with a cohesive, but varied look and feel, we have put the following restrictions on some of the exterior paint color selections.*

1. Schemes with the same number (i.e. 40A and 40B) must be 2 lots away on the same side of the street and at least 1 full lot away on the opposite side of the street. If same letter must be 3 lots same side and 2 lots opposite side away.
2. If you choose: This color must be 2 lots away on same side of street and at least 1 full lot away on opposite side of street:

Scheme #	Old Scheme #
40A	23-24-29-30-31
40B	23-24-30-31
41A	34
41B	
42A	28-30-33
42B	28-33
43A	21-35-36
43B	21-29-32
44A	25
46A	25

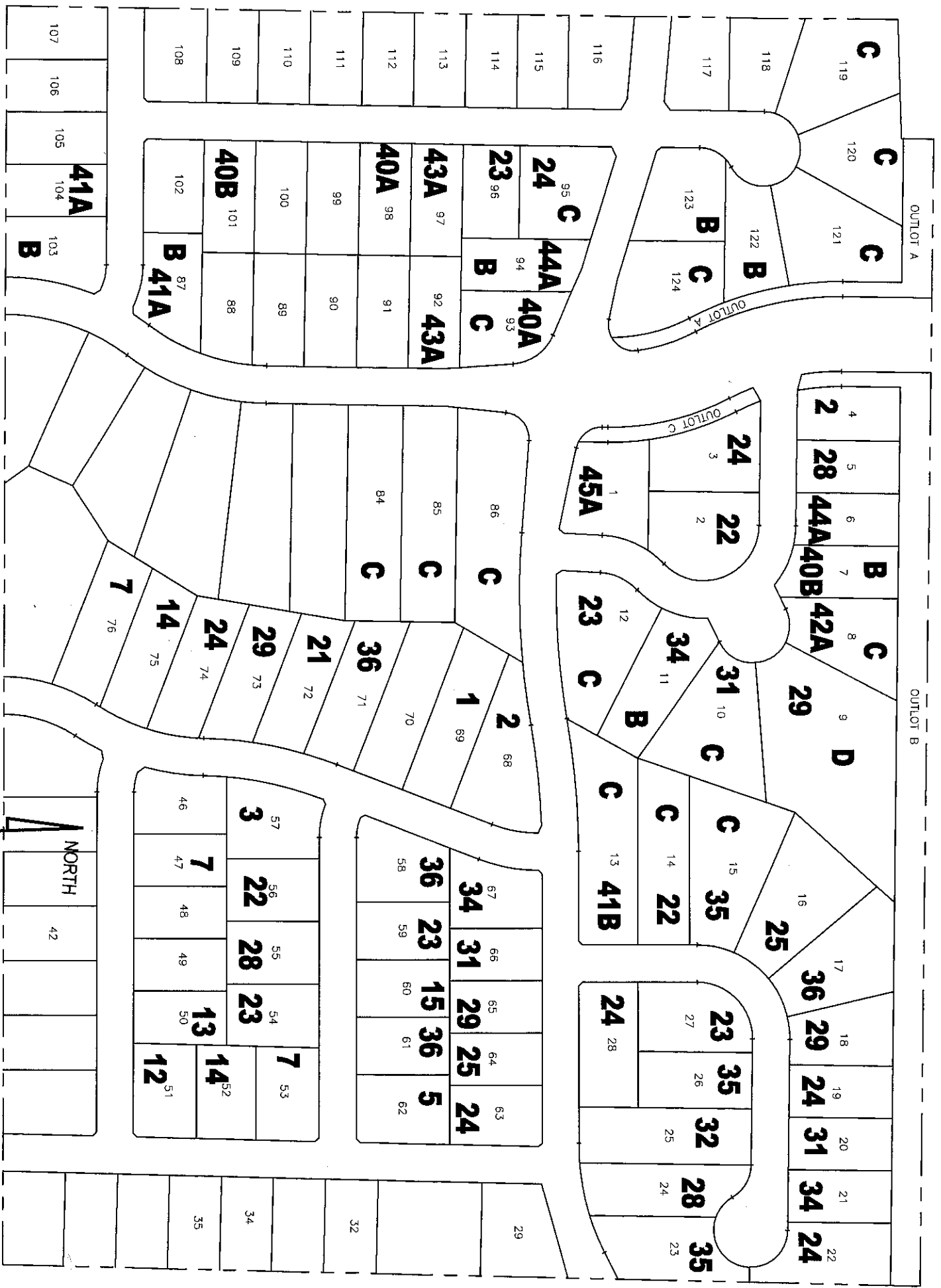
Celebrity Homes		Exterior Color Selections		August 16, 2010		
Scheme	Body	Trim	Door/Accent			
40A	Tree Branch	SW7525	Divine White	SW6105	Rustic Red	SW7593
40B	Homestead Brown	SW7515	Keystone Gray	SW7504	Moderne White	SW6168
41A	Green Earth	SW7748	Nacre	SW6154	Fiery Brown	SW6055
41B	Retreat	SW6207	Creamy	SW7012	Portico	SW7548
42A	Restrained Gold	SW6129	Believable Buff	SW6120	Sierra Redwood	SW7598
42B	Mesa Tan	SW7695	Ivoire	SW6127	Sea Serpent	SW7615
43A	Perfect Greige	SW6073	Pure White	SW7005	Naval	SW6244
43B	Fresco Cream	SW7719	Pottery Um	SW7715	Carmelian	SW7580
44A	Summit Gray	SW7669	Extra White	SW7006	Greenblack	SW6994
45A	Carriage Door	SW7594	Utthan Putty	SW7532	Sanderling	SW7513
46A	Storm Cloud	SW6249	Alabaster	SW7008	Ramie	SW6156



**BROOKSIDE**

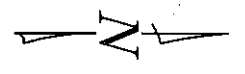
**BROOKPARK**

4-17-2001 to be amended - 02-04-02



CANTERBERRY CROSSING

- 10/4/2011 8:39 AM CANTERBERRY CROSSING-COLOR.dwg



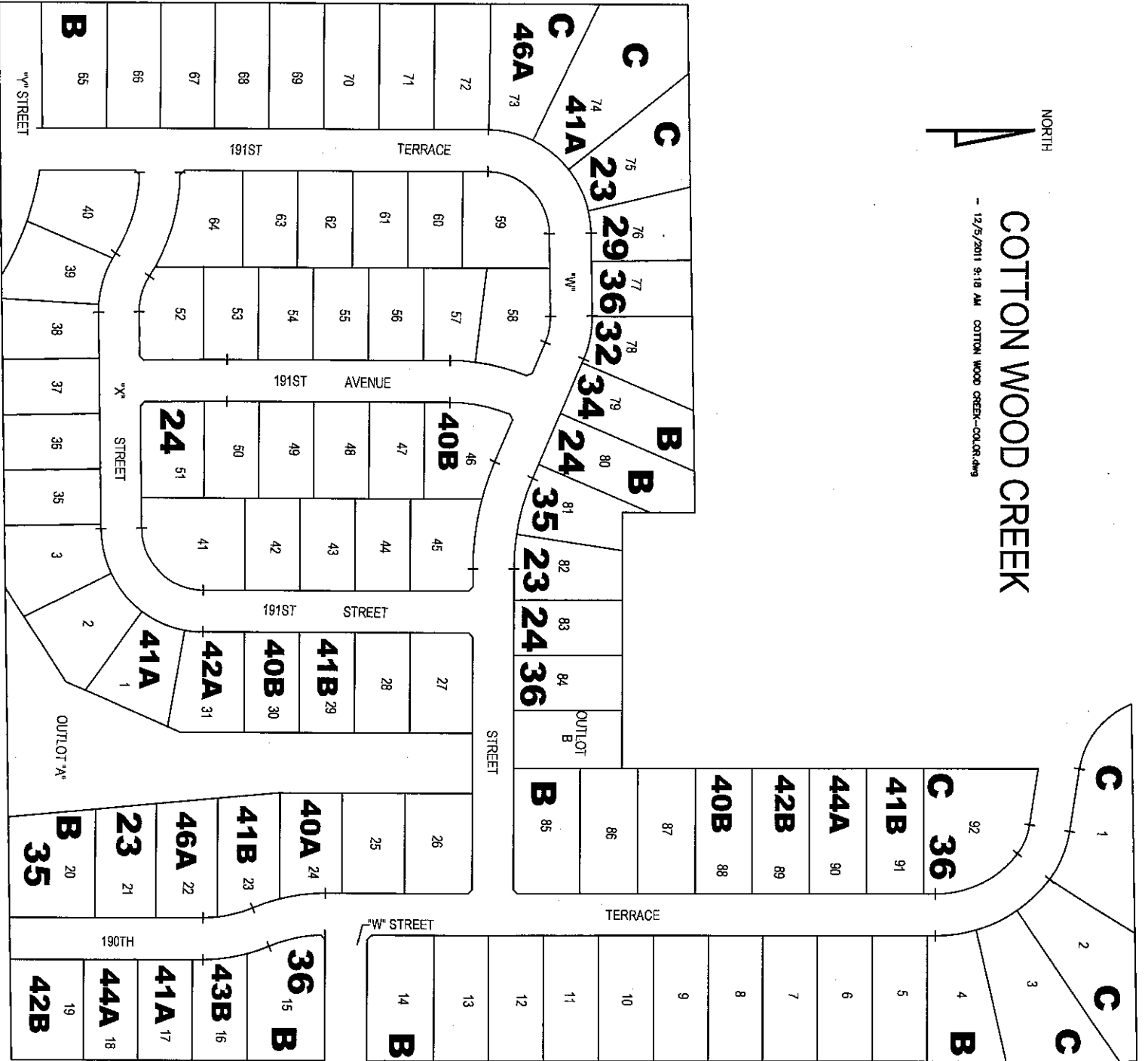
# CIMARRON WOODS



NORTH

# COTTON WOOD CREEK

- 12/5/2011 9:18 AM COTTON WOOD CREEK-COLOR.dwg



C 1

C 2

C 3

C 4

C 5

C 6

C 7

C 8

C 9

C 10

C 11

C 12

C 13

C 14

C 15

C 16

C 17

C 18

C 19

C 20

C 21

C 22

C 23

C 24

C 25

C 26

C 27

C 28

C 29

C 30

C 31

C 32

C 33

C 34

C 35

C 36

C 37

C 38

C 39

C 40

C 41

C 42

C 43

C 44

C 45

C 46

C 47

C 48

C 49

C 50

C 51

C 52

C 53

C 54

C 55

C 56

C 57

C 58

C 59

C 60

C 61

C 62

C 63

C 64

C 65

C 66

C 67

C 68

C 69

C 70

C 71

C 72

C 73

C 74

C 75

C 76

C 77

C 78

C 79

C 80

C 81

C 82

C 83

C 84

C 85

C 86

C 87

C 88

C 89

C 90

C 91

C 92

C 93

C 94

C 95

C 96

C 97

C 98

C 99

C 100

C 101

C 102

C 103

C 104

C 105

C 106

C 107

C 108

C 109

C 110

C 111

C 112

C 113

C 114

C 115

C 116

C 117

C 118

C 119

C 120

C 121

C 122

C 123

C 124

C 125

C 126

C 127

C 128

C 129

C 130

C 131

C 132

C 133

C 134

C 135

C 136

C 137

C 138

C 139

C 140

C 141

C 142

C 143

C 144

C 145

C 146

C 147

C 148

C 149

C 150

C 151

C 152

C 153

C 154

C 155

C 156

C 157

C 158

C 159

C 160

C 161

C 162

C 163

C 164

C 165

C 166

C 167

C 168

C 169

C 170

C 171

C 172

C 173

C 174

C 175

C 176

C 177

C 178

C 179

C 180

C 181

C 182

C 183

C 184

C 185

C 186

C 187

C 188

C 189

C 190

C 191

C 192

C 193

C 194

C 195

C 196

C 197

C 198

C 199

C 200

C 201

C 202

C 203

C 204

C 205

C 206

C 207

C 208

C 209

C 210

C 211

C 212

C 213

C 214

C 215

C 216

C 217

C 218

C 219

C 220

C 221

C 222

C 223

C 224

C 225

C 226

C 227

C 228

C 229

C 230

C 231

C 232

C 233

C 234

C 235

C 236

C 237

C 238

C 239

C 240

C 241

C 242

C 243

C 244

C 245

C 246

C 247

C 248

C 249

C 250

C 251

C 252

C 253

C 254

C 255

C 256

C 257

C 258

C 259

C 260

C 261

C 262

C 263

C 264

C 265

C 266

C 267

C 268

C 269

C 270

C 271

C 272

C 273

C 274

C 275

C 276

C 277

C 278

C 279

C 280

C 281

C 282

C 283

C 284

C 285

C 286

C 287

C 288

C 289

C 290

C 291

C 292

C 293

C 294

C 295

C 296

C 297

C 298

C 299

C 300

C 301

C 302

C 303

C 304

C 305

C 306

C 307

C 308

C 309

C 310

C 311

C 312

C 313

C 314

C 315

C 316

C 317

C 318

C 319

C 320

C 321

C 322

C 323

C 324

C 325

C 326

C 327

C 328

C 329

C 330

C 331

C 332

C 333

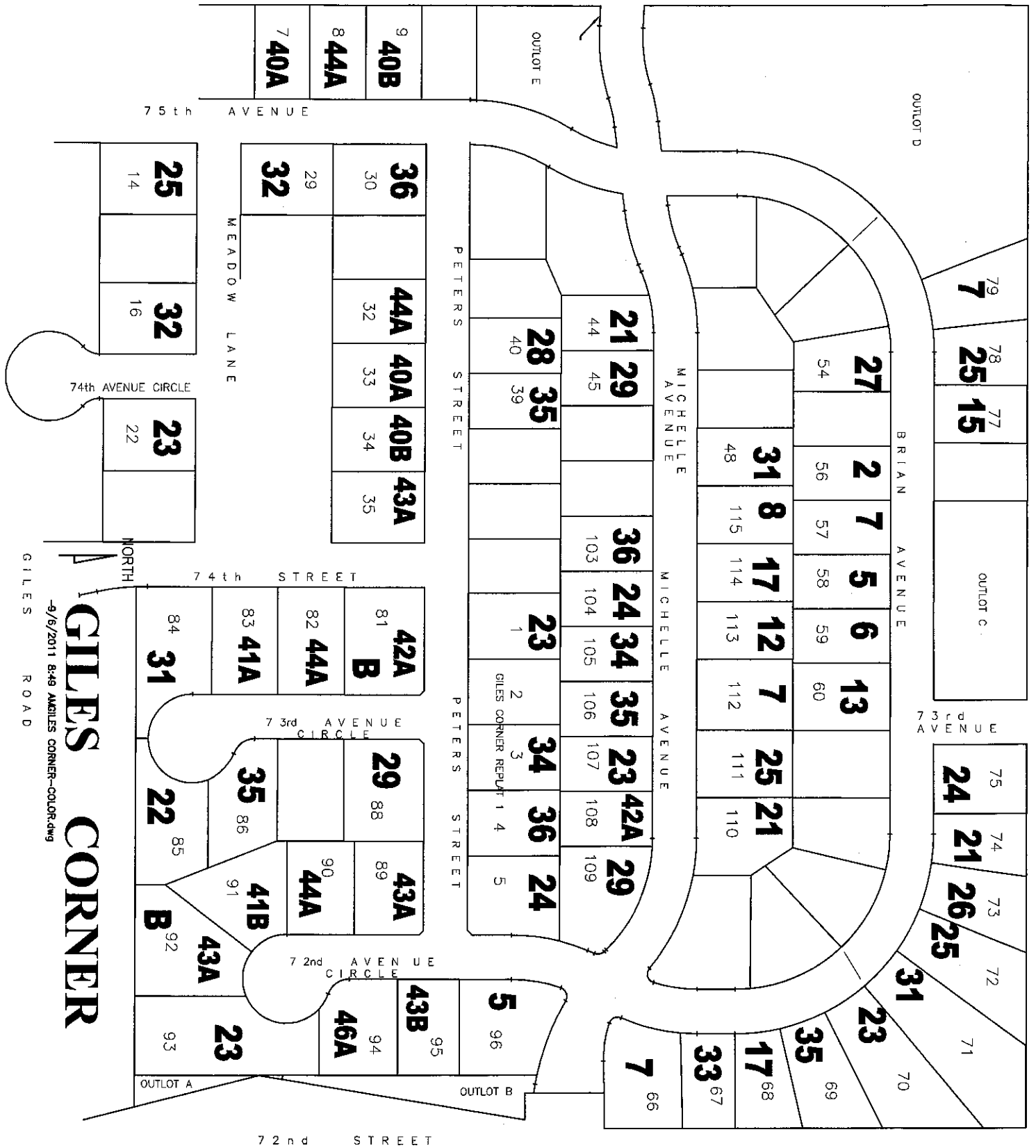
C 334

C 335

C 336

C 337





**GILES CORNER**

9/6/2011 8:49 AM GILES CORNER-COLOR.DWG  
 GILES ROAD

72nd STREET

75th AVENUE

MEADOW LANE

74th AVENUE CIRCLE

74th STREET

73rd AVENUE CIRCLE

72nd AVENUE CIRCLE

PETERS STREET

PETERS STREET

MICHELLE AVENUE

MICHELLE AVENUE

BRIAN AVENUE

73rd AVENUE

OUTLOT B

OUTLOT A

OUTLOT E

OUTLOT D

OUTLOT C



192ND STREET

Y STREET

<b>B</b>	65
<b>41A</b>	64
<b>40B</b>	63
	62
	61
	60
<b>7</b>	59
<b>4</b>	58

# HARRISON PARK WEST

11/7/2011 9:49 AM HARRISON PARK WEST-COLOR.dwg

ADAMS



TERRACE

191ST

66	
67	<b>7</b> 110
68	<b>4</b> 109
69	<b>17</b> 108
70	
71	<b>9</b> 107
72	<b>12</b> 106
73	<b>7</b> 105

STREET

191ST

116	<b>25</b>
117	<b>23</b>
118	<b>7</b>
119	<b>17</b>
120	
121	<b>16</b>
122	<b>1</b>
124	

191ST

REPLAT TWO

ST

48

47

1	2	3	4	5	6	<b>23</b>
						<b>41A</b>
					7	

REPLAT ONE

<b>24</b>	226
<b>31</b>	227

510

STREET

228	229
<b>19</b>	<b>15</b>
<b>1</b>	<b>20</b>
231	230

Z STREET

232	49
<b>22</b>	48
233	47
<b>17</b>	46
<b>34</b>	45
<b>7</b>	44
235	43
<b>31</b>	42
236	41
237	40
238	39
239	38
240	37
241	36
242	35
243	34
244	33
245	32

TAN

31

34

7

31

35

21

23

36

33

30

34

27

30

REPLAT ONE

41

40

39

34

37

38

CINNAMON

34	35	36
<b>7</b>	<b>1</b>	<b>24</b>
REPLAT ONE	31	32
33	31	32
<b>36</b>		

SAH

REPLAT ONE

31

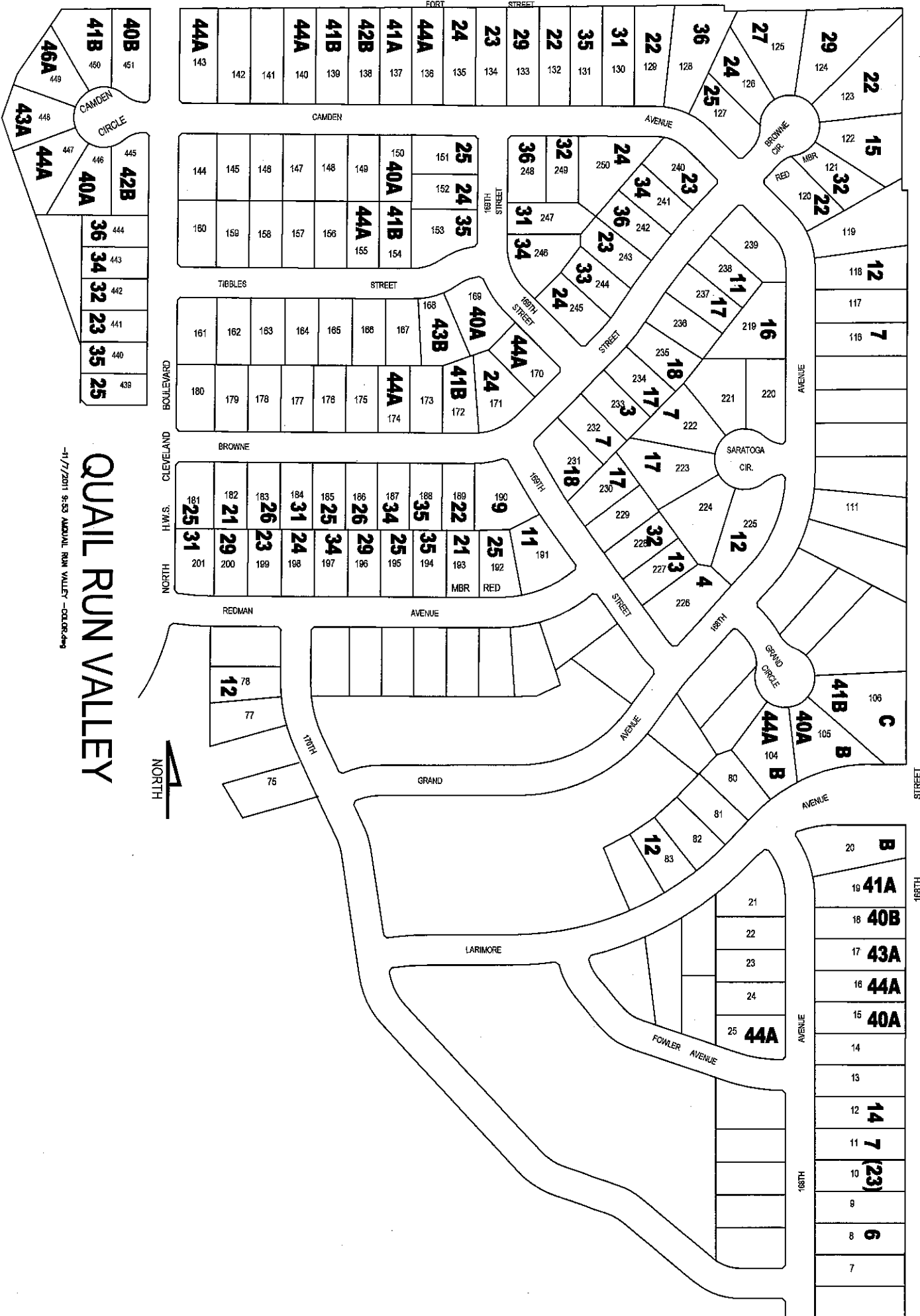
32

33

36

512

STREET



# QUAIL RUN VALLEY

-1/7/2011 8:53 AM QUAIL RUN VALLEY - 00106.dwg

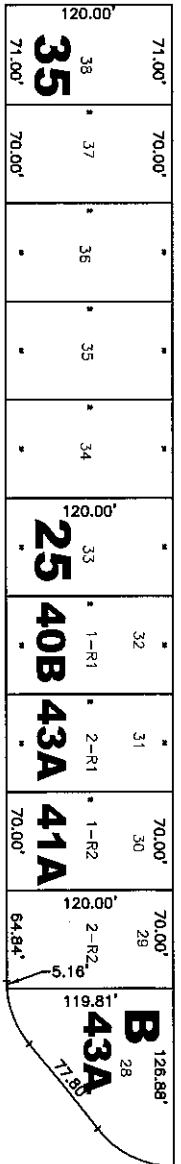


11891

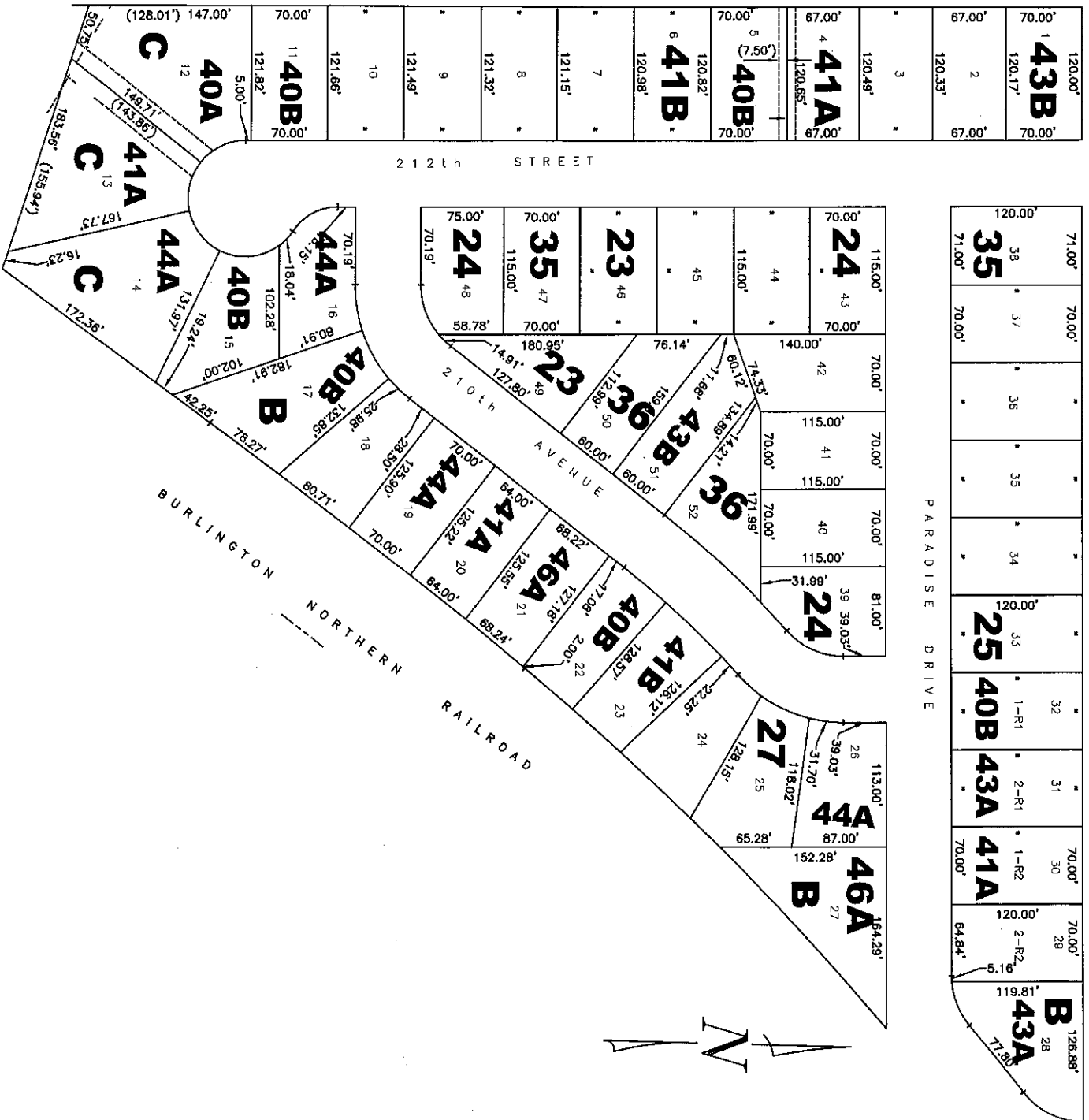
11891

# SANTA FE POINT

GRUENTHER ROAD



PARADISE DRIVE

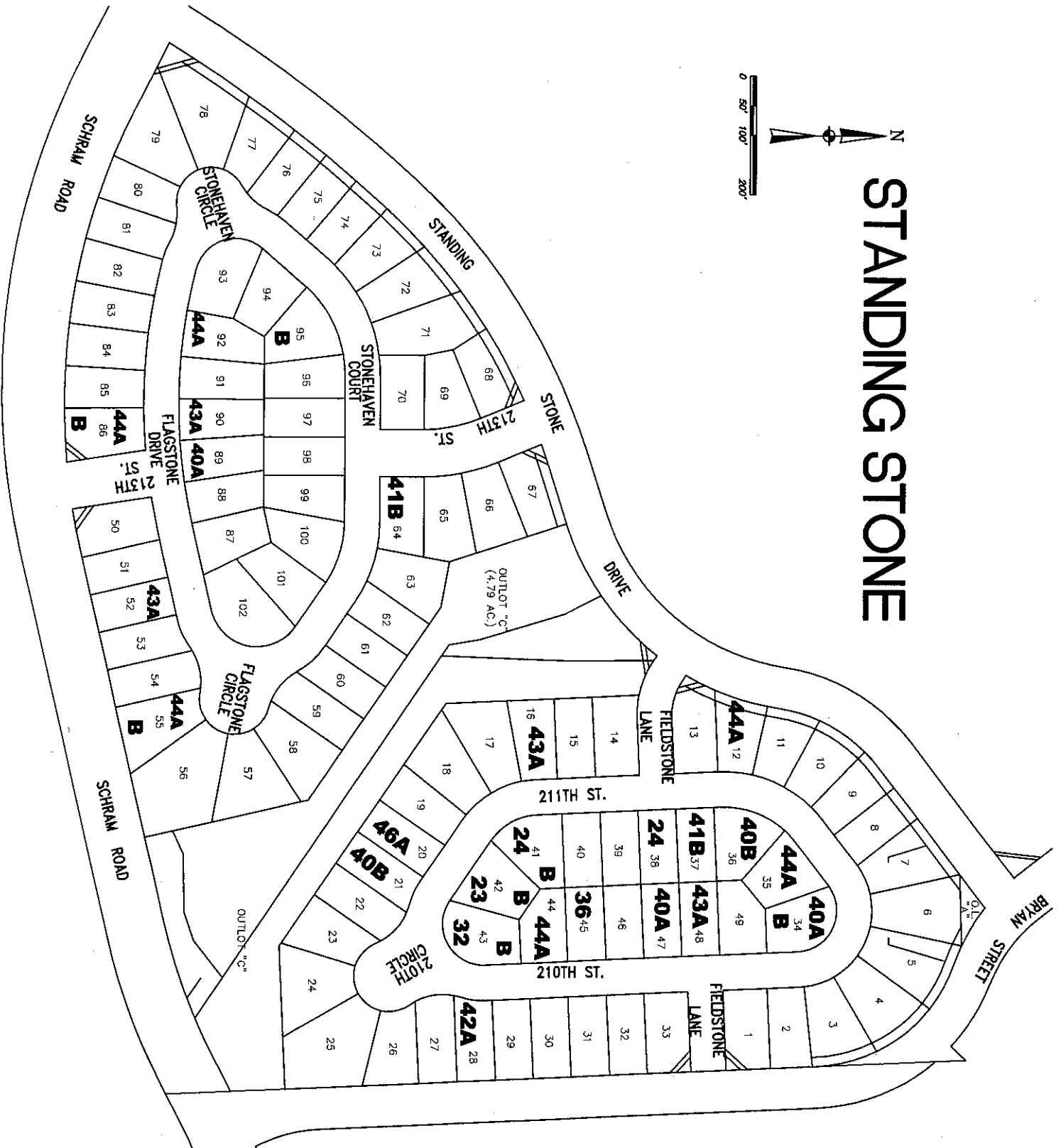
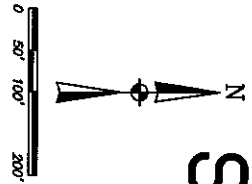


212th STREET

210th AVENUE

BURLINGTON NORTHERN RAILROAD

# STANDING STONE



FORT STREET

STREET

181ST AVE CIR

STREET

170TH CIRCLE

OUTLOT 'A'

BROWNE

STREET

40B

43A

41A

40A

547

546

548

549

550

551

552

553

554

555

556

557

558

559

560

561

562

563

564

565

566

567

568

569

570

571

572

573

574

575

576

577

578

579

580

581

582

583

584

585

586

587

588

589

590

591

592

593

594

595

596

597

598

599

600

601

602

603

604

605

606

607

608

609

610

611

612

613

614

615

616

617

618

619

620

621

622

623

624

625

626

627

628

629

630

631

632

633

634

635

636

637

638

639

640

641

642

643

644

645

646

647

648

649

650

651

652

653

654

655

656

657

658

659

660

661

662

663

664

665

666

667

668

669

670

671

672

673

674

675

676

677

678

679

680

681

682

683

684

685

686

687

688

689

690

691

692

693

694

695

696

697

698

699

700

701

702

703

704

705

706

707

708

709

710

711

712

713

714

715

716

717

718

719

720

721

722

723

724

725

726

727

728

729

730

731

732

733

734

735

736

737

738

739

740

741

742

743

744

745

746

747

748

749

750

751

752

753

754

755

756

757

758

759

760

761

762

763

764

765

766

767

768

769

770

771

772

773

774

775

776

777

778

779

780

781

782

783

784

785

786

787

788

789

790

791

792

793

794

795

796

797

798

799

800

801

802

803

804

805

806

807

808

809

810

811

812

813

814

815

816

817

818

819

820

821

822

823

824

825

826

827

828

829

830

831

832

833

834

835

836

837

838

839

840

841

842

843

844

845

846

847

848

849

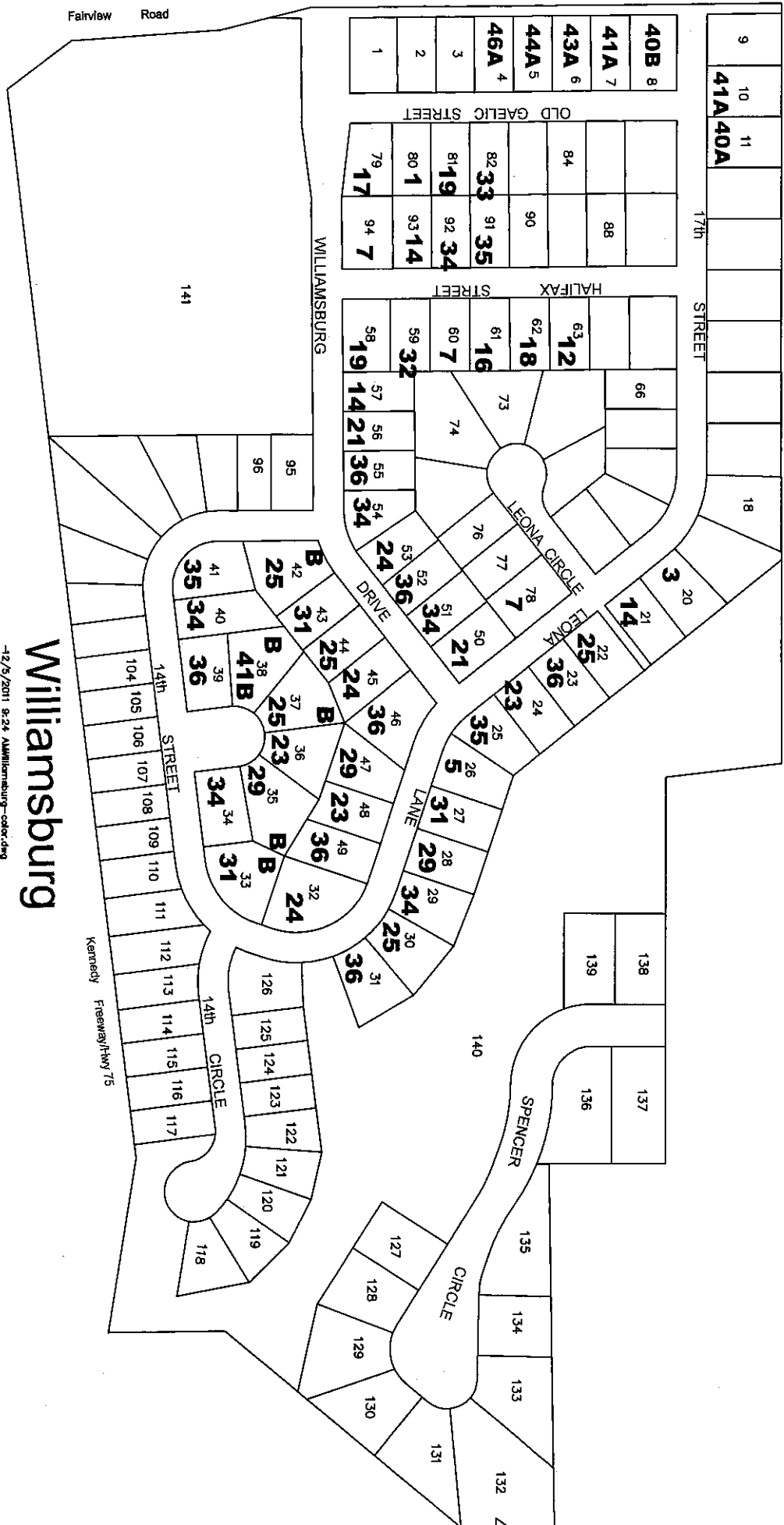
850

851

852

85





# Williamsburg

-12/5/2011 9:24 AM Williamsburg-ccdr.dwg



# WOOD VALLEY

